




PATIENT CARE

encompass

Better care starts
with safety and comfort.



ENCOMPASS. FIRST IN SAFETY AND COMFORT.

From coordinated apparel and comforting textiles, to innovative patient care solutions that drive compliance and improve patient outcomes, we partner with our valued customers to create warm, welcoming and healing environments.

For nearly a century, Encompass has been helping health care and hospitality organizations create safe, comfortable environments for patients, staff, residents and guests.

Whether developing advanced technologies for the prevention of hypothermia and deep vein thrombosis, helping hospitals reduce the spread of infections, or designing interiors for new, state-of-the-art retirement communities, we offer a complete line of products, services and education programs that meet the challenges our customers face every day.

Other catalogs available:

- Operating Room
- Patient Room
- Personal Protective Equipment
- Staff Apparel





We're focused on prevention so you can focus on care.

Research shows a strong link between physical environments and quality of care. By providing clinically proven products and services that prevent a number of serious conditions, Encompass works with you to achieve significant and quantifiable improvements in care.

ACUTE CARE

With our superior line of products and services, you can create a comfortable, protective and healing environment for patients, residents, staff and visitors. Soft and attractive linens and apparel, non-slip footwear, fluffy pillows, hypothermia-prevention products, clinically differentiated DVT prevention products and best-performing therapeutic support surfaces are just a few reasons why advanced acute care facilities across the nation have come to depend on us.

Our focus also goes well beyond just prevention. We also provide the tools and information you need to make more informed decisions about the products you use. Our commitment to clinical education is a key value-added benefit we provide to empower your

organization to have fewer preventable events, reduce costs and—most importantly—keep your patients and staff comfortable and safe.

MAKE NON-COVERED CONDITIONS A NON-ISSUE.

Recently, the Centers for Medicare and Medicaid Services (CMS) announced they would no longer reimburse for a wide range of preventable conditions that are not present upon admission. These hospital acquired conditions currently include patient falls and deep vein thrombosis in some circumstances. Additionally, they are looking to expand the list as time goes on. We provide the products you need to help prevent these non-reimbursable challenges from happening in the first place. The end result—improved clinical outcomes and a dramatic decrease in costs.



HEALTH CARE-ASSOCIATED INFECTIONS (HAIs)

HAIs are the fourth largest killer in America and add an estimated \$30.5 billion to the nation's hospital costs annually. Clinically-based evidence demonstrates life-threatening surgical-site infections could be reduced by as much as two-thirds by utilizing simple hypothermia prevention measures such as Thermoflect® heat reflective technology.



DEEP VEIN THROMBOSIS (DVT)

DVT is the primary contributor to the development of pulmonary embolisms (PE). PE is the third most common cause of death and reportedly the number one preventable hospital acquired condition. CMS reported \$7.13 billion was spent in fiscal year 2007 for the treatment of DVT. This staggering number earned DVT a prominent position on the CMS Hospital Acquired Conditions list for fiscal year 2009.

Effective prevention requires superior products and a commitment to clinical education. Our StarSystem™ family of DVT prevention products includes feature-rich solutions for clinicians focused on the best possible outcome for all patients.

PATIENT FALLS

In hospitals, falls consistently make up the largest single category of reported incidents. The morbidity, mortality and financial burdens attributed to patient falls in hospitals and other healthcare settings are among the most serious risk management issues facing the healthcare industry with an estimated \$20 billion spent annually to treat fall injuries.

As the established market share leader, we have the most comprehensive patient safety footwear offering available including: high visibility risk management, eco-friendly recycled yarns, single tread, double tread, all-around tread and fashion styles.



CLINICAL EDUCATION AND CONSULTING

In an age of rising health care costs, our clinical resource experts can help you promote the well-being of everyone in your care, and stay true to your bottom line. Along with our Smart Solutions™ clinical education tools, product implementation programs and cost management consulting services, we offer the tools and resources you need to educate your staff, evaluate product use, reduce costs, improve care and create healthier environments.





PROVIDING INNOVATIVE, SOLUTION-FOCUSED PRODUCTS

Clinical, therapeutic and limited-use health care prevention and comfort products

We are honored to be a market leader in disposable and limited-use healthcare products, and are proud they promote healing through comfort, safety and compliance. We have a robust product development program that continually introduces exciting breakthroughs in product design, quality improvement, manufacturing efficiency and productivity.

Table of Contents

RISK MANAGEMENT	4
DVT Prevention	5
Hypothermia Prevention	8
Falls Prevention	10
Patient Safety Footwear	12
Protective Garments	16
Patient Positioners	18
WOUND & SKIN CARE	19
Stockinette	20
Dressings	24
Dressing Retainers	25
Washcloths & Cleaners	26
Incontinent Care	27
Avcor Compression Bandages	30



NxSTAR DVT Prevention System

Risk Management

Effective risk management protocols are built on three key elements:

- Safety — products that provide enhanced safety measures
- Comfort — products designed to address the comfort of the patient without sacrificing efficacy
- Compliance — products with features that drive compliance

SAFETY

Innovative safety features are found throughout the Encompass product offering. Some highlights include: Thermoflect® Hypothermia Prevention Products which effectively warm patients without the use of electricity, NxSTAR® DVT Prevention System with pre-set optimum therapeutic pressure to insure precise, consistent therapy and Patient Safety Footwear tread with superior coefficient of friction to provide better patient protection from falls.

COMFORT

Even the best environments can seem uncomfortable when undergoing medical treatment. Quality and comfort communicate we care. Our entire risk management offering is latex-free and manufactured with the highest quality materials to insure maximum comfort. The patent pending Rightway® System found in our UltraCARE™ Anti-Embolic Stockings provides superior comfort through better fit and significantly reduces the likelihood of skin breakdown.

COMPLIANCE

We perceive compliance as the ultimate compliment. Clinicians have used our products for over 25 years with exceptional patient compliance. Our robust product development process incorporates nationwide clinician and patient input into every product design. The result is the easiest to use and most comfortable products available today that effectively drive compliance.





NxSTAR Pump



NxSTAR Foot Wrap



NxSTAR Calf Wrap

NxSTAR® Intermittent Pneumatic Compression Therapy

PUMP

- Calf and foot compression
- Single or dual limb operation
- Color coded safety connectors
- Ultra lightweight

GARMENTS

LATEX FREE

- Single chamber design
- Universal fit (right or left)
- High visibility binding
- Made in USA



CAT #	DESCRIPTION	SIZE	TRIM	QTY/CASE
NX5000	NxSTAR Pump			
L3778-01	NxSTAR Calf Wrap	Regular	Blue	10 PR
L3778-02	NxSTAR Calf Wrap	Oversize	Blue	10 PR
BL3778-01	NxSTAR Calf Wrap Bulk	Regular	Blue	24 PR
BL3778-02	NxSTAR Calf Wrap Bulk	Oversize	Blue	24 PR
F5778-01	NxSTAR Foot Wrap	Regular	Blue	10 PR
F5778-02	NxSTAR Foot Wrap	Oversize	Blue	10 PR
BF5778-01	NxSTAR Foot Wrap Bulk	Regular	Blue	24 PR
BF5778-02	NxSTAR Foot Wrap Bulk	Oversize	Blue	24 PR

PulSTAR® Intermittent Pneumatic Compression Therapy

PUMP

- Calf compression
- Proprietary safety connectors

GARMENTS

LATEX FREE

- Ergonomic tubing connectors
- VELCRO® closures
- Cool and comfortable



CAT #	DESCRIPTION	SIZE	COLOR	QTY/CASE
24000	PulSTAR Pump			
53558-01	PulSTAR Calf Wrap	Regular	White	10 PR
53558-02	PulSTAR Calf Wrap	Oversize	White	10 PR
B53558-01	PulSTAR Calf Wrap Bulk	Regular	White	24 PR
B53558-02	PulSTAR Calf Wrap Bulk	Oversize	White	24 PR
B53558-G1	PulSTAR Calf Wrap Bulk Made in USA	Regular	White	24 PR
B53558-G2	PulSTAR Calf Wrap Bulk Made in USA	Oversize	White	24 PR



PulSTAR Pump



PulSTAR Calf Wrap



Rightway® System

The Rightway System was designed to combine superior fit and ease of application through three proprietary design features:

RIGHTWAY ANKLE CREST

- Ribbed for comfort
- Reduces excess material
- Prevents skin shearing

RIGHTWAY HEEL

- Oversized heel pouch
- Assists proper placement
- Eases donning and doffing

RIGHTWAY HEEL GUIDES

- Assists proper positioning
- High visibility colors
- Easily identify proper sizing

KEY FEATURES FOR ALL ANTI-EMBOLISM STOCKINGS

- Alignment indicator aids proper positioning on leg front
- Color coded inspection port for easy size identification
- Outward facing seams reduce skin irritation and/or skin depressions as limb size changes
- Multiple sizes to insure proper fit
- Rapid moisture transfer moves fluids and body oils from skin to surface of the fabric quickly to speed drying, reduce bacteria and improve laundering
- Two-way stretch fabric provides easier application and conforms to various leg silhouettes
- Latex-free for sensitive skin
- Upgraded size standards meet the needs of a larger patient population
- Top inspection port provides convenient access to toes and top of foot; improves patient comfort to encourage ambulation
- No bind, roll resistant premium elastic top keeps stocking in place
- Comfort panel in thigh/waist reduces tourniquet effect and allows expansion for edema
- Adjustable waist strap for comfortable fit



UltraCARE™

LATEX
FREE

RIGHTWAY® SYSTEM

- Colored heel guides
- Oversized heel pouch
- Ribbed ankle crest
- Anti-microbial finish
- Textured foot
- Sizes up to 3X-Large
- Knee, thigh and waist
- Color-coded packaging



SHORT	CATALOG NUMBER		DESCRIPTION	SIZE TOE/TOP	COLOR	QTY/CASE
	REGULAR	LONG				
851-01	853-01	858-01	UltraCARE Knee	Small	Yellow	12 PR
851-02	853-02	858-02	UltraCARE Knee	Medium	Orange	12 PR
851-03	853-03	858-03	UltraCARE Knee	Large	Blue	12 PR
851-04	853-04	858-04	UltraCARE Knee	X-Large	Green	12 PR
851-05	853-05	858-05	UltraCARE Knee	2X-Large	Grey	12 PR
	853-06		UltraCARE Knee	3X-Large	Purple	12 PR
863-01	868-01	873-01	UltraCARE Thigh	Small	Yellow	12 PR
863-02	868-02	873-02	UltraCARE Thigh	Medium	Orange	12 PR
863-03	868-03	873-03	UltraCARE Thigh	Large	Blue	12 PR
863-04	868-04	873-04	UltraCARE Thigh	X-Large	Green	12 PR
863-05	868-05	873-05	UltraCARE Thigh	2X-Large	Grey	12 PR
	868-06		UltraCARE Thigh	3X-Large	Purple	12 PR
	83004-01	83007-01	UltraCARE Waist	Small	Yellow	6 PR
	83004-02	83007-02	UltraCARE Waist	Medium	Orange	6 PR
	83004-03	83007-03	UltraCARE Waist	Large	Blue	6 PR
	83004-04	83007-04	UltraCARE Waist	X-Large	Green	6 PR



EssentialCARE™

LATEX
FREE

- Color-coded formed heel block
- Generously sized foot and ankle
- Knee and thigh



SHORT	CATALOG NUMBER		DESCRIPTION	SIZE TOE/TOP	COLOR	QTY/CASE
	REGULAR	LONG				
	953-01	958-01	EssentialCARE Knee	Small	Yellow	12 PR
	953-02	958-02	EssentialCARE Knee	Medium	Orange	12 PR
	953-03	958-03	EssentialCARE Knee	Large	Blue	12 PR
	953-04	958-04	EssentialCARE Knee	X-Large	Green	12 PR
963-01	968-01	973-01	EssentialCARE Thigh	Small	Yellow	12 PR
963-02	968-02	973-02	EssentialCARE Thigh	Medium	Orange	12 PR
963-03	968-03	973-03	EssentialCARE Thigh	Large	Blue	12 PR
963-04	968-04	973-04	EssentialCARE Thigh	X-Large	Green	12 PR



Pre-Op



Intra-Op



PACU



ThermoFlect products are not for use in MR environments.

**NOT FOR
USE IN MRI**

Procedure Packs LATEX FREE

CAT #	DESCRIPTION	SIZE	COLOR	QTY/CASE
5200-400	4' x 4' Blanket, 1 Pair Leg Coverings, Adult Cap	Universal	Silver	20 EA
5200-700	4' x 7' Blanket, Adult Cap	Universal	Silver	24 EA

THERMOFLECT® Hypothermia Prevention System

ThermoFlect is a simple solution to hypothermia that utilizes NASA-pioneered science instead of electricity. The innovative ThermoFlect products reflect a patient's endogenous radiant heat, banking it in the body's core, while preventing convective heat loss (wind chill).

USING THERMOFLECT IS AS EASY AS 1, 2, 3

Optimum hypothermia prevention must begin while the patient is warm before entry into the OR Suite — *Bank the Heat to Beat the Chill*.

1. Cover the patient as early as possible.
2. Cover the patient's maximum body surface area — tucking the material around the patient to help seal in the heat.
3. Maintain maximum coverage throughout all perioperative phases — Pre-Op, Intra-Op, PACU.

ThermoFlect products are:

- Latex-free
- Nonconductive
- Meets:
 - 16 CFR Part 1610 Standard for Flammability of Clothing Textiles
 - 16 CFR Part 1615 Standard for the Flammability of Children's Sleepwear Sizes 0 through 6X
 - 16 CFR Part 1616 Standard for the Flammability of Children's Sleepwear Sizes 7 through 14
- Lined with a soft, patient-friendly inner surface.
- Cost-effective, ultra-lightweight yet durable, and move easily with the patient throughout the perioperative journey.
- Trusted. It has become a part of the US Military's Hypothermia Prevention Protocol.



Patient Care

LATEX
FREE

CAT #	DESCRIPTION	SIZE	COLOR	QTY/CASE
5105-100	Pulse Oximeter Mitt	Universal	Silver	50 EA
5100-200	Blanket, Small	36" x 40"	Silver	60 EA
5100-400	Blanket, Medium	48" x 48"	Silver	50 EA
5100-700	Blanket, Large	48" x 84"	Silver	25 EA
5100-250	Papoose, Infant	5 to 10 lbs	Silver	50 EA
5120-350	Leg Coverings	34" Long	Silver	100 EA



Blankets



Adult Gown (5145-500) and Cap (5110-100)

Adult Patient Apparel

LATEX
FREE

CAT #	DESCRIPTION	SIZE	COLOR	QTY/CASE
5110-100	Bouffant Cap, Adult	Large	Silver	100 EA
5115-200	Booties	Universal	Silver	50 EA
5145-500	Gown	Universal	Silver	60 EA

Infant and Pediatric Patient Apparel

LATEX
FREE

CAT #	DESCRIPTION	SIZE	COLOR	QTY/CASE
5110-150	Bouffant Cap, Youth	Medium	Silver	50 EA
5110-200	Bouffant Cap, Infant	Small	Silver	100 EA
5110-250	Bouffant Cap, Neonatal	X-Small	Silver	100 EA
5180-200	Jacket, Pediatric	XS (2-3)	Silver	50 EA
5180-300	Jacket, Pediatric	S (4-5)	Silver	50 EA
5180-400	Jacket, Pediatric	M (6-8)	Silver	50 EA
5180-500	Jacket, Pediatric	L (10-12)	Silver	50 EA
5185-200	Pants, Pediatric	XS (2-3)	Silver	50 EA
5185-300	Pants, Pediatric	S (4-5)	Silver	50 EA
5185-400	Pants, Pediatric	M (6-8)	Silver	50 EA
5185-500	Pants, Pediatric	L (10-12)	Silver	50 EA



Youth Cap (5110-150), Pediatric Jacket and Pants

Specialty Products

LATEX
FREE

CAT #	DESCRIPTION	SIZE	COLOR	QTY/CASE
5170-200	The Transport Cocoon™	Universal	Silver	10 EA
5300-100	TherMuff™ Bag, Sterile	8.5" x 9"	Silver	50 EA

NOT FOR
USE IN MRI

Thermoflect products are not for use in MR environments.





Falls Prevention

Albahealth® understands your patient safety and fall prevention needs and has been the trusted partner of more healthcare facilities nationwide than any other patient safety footwear manufacturer for over 25 years.

Vibrant colors, larger tread surfaces and superior coefficient of friction ensure your patients at risk for falls are easily identified and safer every step of their stay.

We offer an extensive line of patient safety footwear and risk alert products for effortless implementation into falls intervention programs across the nation.

Proven Superior Coefficient of Friction

ALBAHEALTH®
FOOTWEAR

.904

Average Kinetic
Coefficient of Friction

COMPETITION

.487

Average Kinetic
Coefficient of Friction

Testing Method ASTM D 1894-06.
Test performed by an independent testing facility.



Albahealth is a subsidiary of Encompass Group, LLC.

Care-Steps® Risk Management LATEX FREE

- Double tread
- Sizes up to 3X-Large
- Terry side out
- Superior coefficient of friction



CAT #	DESCRIPTION	SIZE	COLOR	QTY/CASE
80189	Double Tread	Child/Sm Adult	Red	48 PR
80190	Double Tread	Medium	Red	48 PR
80191	Double Tread	Large	Red	48 PR
80192	Double Tread	X-Large	Red	48 PR
80193	Double Tread	2X-Large	Red	48 PR
80194	Double Tread	3X-Large	Red	48 PR
80179	Double Tread	Child/Sm Adult	Yellow	48 PR
80180	Double Tread	Medium	Yellow	48 PR
80181	Double Tread	Large	Yellow	48 PR
80182	Double Tread	X-Large	Yellow	48 PR
80183	Double Tread	2X-Large	Yellow	48 PR
80184	Double Tread	3X-Large	Yellow	48 PR
80172	Double Tread	X-Large	Orange	48 PR

CAT #	DESCRIPTION	SIZE	COLOR	QTY/CASE
90389	All-Around Tread	Child/Sm Adult	Red	48 PR
90390	All-Around Tread	Medium	Red	48 PR
90391	All-Around Tread	Large	Red	48 PR
90392	All-Around Tread	X-Large	Red	48 PR
90393	All-Around Tread	2X-Large	Red	48 PR
90379	All-Around Tread	Child/Sm Adult	Yellow	48 PR
90380	All-Around Tread	Medium	Yellow	48 PR
90381	All-Around Tread	Large	Yellow	48 PR
90382	All-Around Tread	X-Large	Yellow	48 PR
90383	All-Around Tread	2X-Large	Yellow	48 PR
90207	All-Around Tread	X-Large	Emerald	48 PR

Confetti Treads™ Risk Management LATEX FREE

- Maximum tread coverage
- Sizes up to 2X-Large
- Smooth side out
- High visibility colors



Safe-Steps™ Fall Risk Management Kits LATEX FREE

- Stickers
- Bracelets
- Magnets
- Patient safety footwear



CAT #	DESCRIPTION	SIZE	COLOR	QTY/CASE
911R	Fall Risk Management Complete Kit	X-Large	Red	48 PR
911Y	Fall Risk Management Complete Kit	X-Large	Yellow	48 PR
911G	Fall Risk Management Complete Kit	X-Large	Green	48 PR
RS0001	Fall Risk Management Stickers	N/A	Red	50 PR
YS0001	Fall Risk Management Stickers	N/A	Yellow	50 PR
GS0001	Fall Risk Management Stickers	N/A	Green	50 PR
RM0001	Fall Risk Management Magnet	N/A	Red	50 PR
YM0001	Fall Risk Management Magnet	N/A	Yellow	50 PR
GM0001	Fall Risk Management Magnet	N/A	Green	50 PR
RRB001	Fall Risk Management Bracelet	N/A	Red	50 PR
YRB001	Fall Risk Management Bracelet	N/A	Yellow	50 PR
GRB001	Fall Risk Management Bracelet	N/A	Green	50 PR
90392	Confetti Treads Footwear	X-Large	Red	48 PR
90382	Confetti Treads Footwear	X-Large	Yellow	48 PR
90207	Confetti Treads Footwear	X-Large	Emerald	48 PR



Eco-Steps™ – Single Tread LATEX FREE

- Single tread
- Smooth side out
- Lightweight construction
- Made from 70% recycled content

CAT #	DESCRIPTION	SIZE	COLOR	QTY/CASE
E0102	Eco-Steps Single Tread	Child/Sm Adult	Sienna	48 PR
E0103	Eco-Steps Single Tread	Medium	Redwood	48 PR
E0104	Eco-Steps Single Tread	Large	Hickory	48 PR
E0106	Eco-Steps Single Tread	X-Large	Spruce	48 PR
E0108	Eco-Steps Single Tread	2X-Large	Pine	48 PR

Eco-Steps™ – Double Tread LATEX FREE

- Double tread
- Smooth side out
- Heavyweight construction
- Made from 70% recycled content

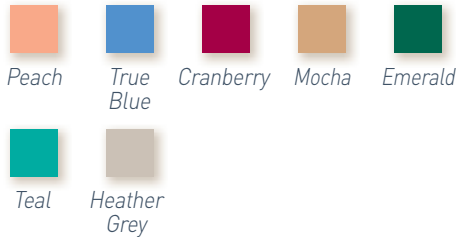
CAT #	DESCRIPTION	SIZE	COLOR	QTY/CASE
E0202	Eco-Steps Double Tread	Child/Sm Adult	Sienna	48 PR
E0203	Eco-Steps Double Tread	Medium	Redwood	48 PR
E0204	Eco-Steps Double Tread	Large	Hickory	48 PR
E0206	Eco-Steps Double Tread	X-Large	Spruce	48 PR
E0208	Eco-Steps Double Tread	2X-Large	Pine	48 PR



Eco-Steps™ – Fashion Treads® LATEX FREE

- Single tread
- Smooth side out
- Ribbed ankle
- Made from 70% recycled content

CAT #	DESCRIPTION	SIZE	COLOR	QTY/CASE
93083-SEA	Eco-Steps Fashion Tread	Small/Medium	Sienna	48 PR
93084-BUR	Eco-Steps Fashion Tread	Large/X-Large	Redwood	48 PR
93084-GRE	Eco-Steps Fashion Tread	Large/X-Large	Hickory	48 PR
93084-BLU	Eco-Steps Fashion Tread	Large/X-Large	Spruce	48 PR
93084-NAV	Eco-Steps Fashion Tread	2X-Large	Pine	48 PR



Confetti Treads™ – All-Around Tread

LATEX FREE

- Maximum tread coverage
- Smooth side out
- Sizes up to 4X-Large
- Heavyweight construction

CAT #	DESCRIPTION	SIZE	COLOR	QTY/CASE
90212	All-Around Tread	Toddler	Peach	48 PR
90209	All-Around Tread	Child/Sm Adult	True Blue	48 PR
90210	All-Around Tread	Medium	Cranberry	48 PR
90205	All-Around Tread	Large	Mocha	48 PR
90207	All-Around Tread	X-Large	Emerald	48 PR
90211	All-Around Tread	2X-Large	Teal	48 PR
90219	All-Around Tread	3X-Large	Heather Grey	48 PR
90221	All-Around Tread	4X-Large	Heather Grey	48 PR

Eco-Fetti Treads™ – All-Around Tread

LATEX FREE

- Maximum tread coverage
- Made from 70% recycled content
- Smooth side out
- Heavyweight construction

CAT #	DESCRIPTION	SIZE	COLOR	QTY/CASE
E9202	All Around Tread	Small	Sienna	48 PR
E9203	All Around Tread	Medium	Redwood	48 PR
E9204	All Around Tread	Large	Hickory	48 PR
E9206	All Around Tread	X-Large	Spruce	48 PR
E9208	All Around Tread	2X-Large	Pine	48 PR



Universal Treads™

LATEX FREE

- High-top welt
- Terry side out
- Single or double tread
- One size fits most

CATALOG NUMBER		SIZE	COLOR	QTY/CASE
SINGLE TREAD	DOUBLE TREAD			
UNV-J1	UNV-J2	Universal	Jade	48 PR
	UNV-R2	Universal	Red	48 PR
	UNV-Y2	Universal	Yellow	48 PR



Care-Steps® – Single Tread LATEX FREE

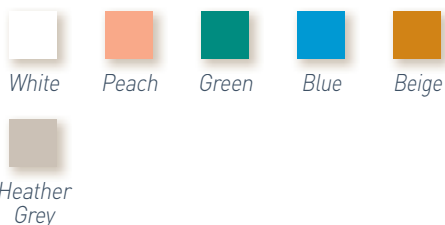
- Single tread
- Smooth side out
- Sizes up to 4X-Large
- Latex-free

CAT #	DESCRIPTION	SIZE	COLOR	QTY/CASE
80101	Single Tread	Infant	White	48 PR
80112	Single Tread	Toddler	Peach	48 PR
80102	Single Tread	Child/Sm Adult	Moss Green	48 PR
80103	Single Tread	Medium	Blue	48 PR
80104	Single Tread	Large	Beige	48 PR
80106	Single Tread	X-Large	Grey	48 PR
80108	Single Tread	2X-Large	Moss Green	48 PR
80118	Single Tread	3X-Large	Heather Grey	48 PR
80120	Single Tread	4X-Large	Heather Grey	48 PR

Care-Steps® – Double Tread LATEX FREE

- Double tread
- Smooth side out
- Sizes up to 4X-Large
- Latex-free

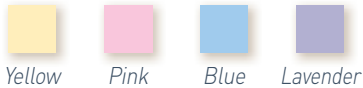
CAT #	DESCRIPTION	SIZE	COLOR	QTY/CASE
80109	Double Tread	Child/Sm Adult	Moss Green	48 PR
80110	Double Tread	Medium	Blue	48 PR
80105	Double Tread	Large	Beige	48 PR
80107	Double Tread	X-Large	Grey	48 PR
80111	Double Tread	2X-Large	Moss Green	48 PR
80119	Double Tread	3X-Large	Heather Grey	48 PR
80121	Double Tread	4X-Large	Heather Grey	48 PR



Terry Treads® LATEX FREE

- Single or double tread
- Terry side out
- Sizes up to 2X-Large
- Latex-free

CATALOG NUMBER		SIZE	COLOR	QTY/CASE
SINGLE TREAD	DOUBLE TREAD			
46012-TNY		Infant	White	48 PR
46011-TOD	46012-TOD	Toddler	Peach	48 PR
46011-PED	46012-PED	Child/Sm Adult	Green	48 PR
46011-BLU	46012-BLU	Medium	Blue	48 PR
46011-LAR	46012-LAR	Large	Beige	48 PR
46011-XLG	46012-XLG	X-Large	Grey	48 PR
46011-XXL	46012-XXL	2X-Large	Green	48 PR



Daisy-Steps™ – Single Tread LATEX FREE

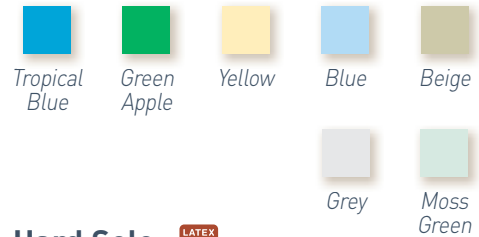
- Ultra plush
- Ankle cut
- Cotton/spandex blend
- Raised effect tread
- Color coded by size
- Reciprocated heel

CAT #	DESCRIPTION	SIZE	COLOR	QTY/CASE
80602	Premium Single Tread	Small	Yellow	48 PR
80603	Premium Single Tread	Medium	Pink	48 PR
80604	Premium Single Tread	Large	Blue	48 PR
80606	Premium Single Tread	X-Large	Lavender	48 PR

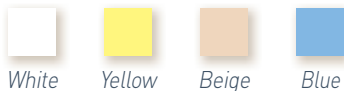
Safe-T Treads™ – Flexible Sole LATEX FREE

- Full foot silhouette
- Reciprocated heel
- Smooth side out
- Ribbed ankle
- Sizes up to 2X-Large

CAT #	DESCRIPTION	SIZE	COLOR	QTY/CASE
80400	Solid Flexible Sole Tread	Toddler	Tropical Blue	48 PR
80401	Solid Flexible Sole Tread	Pediatric	Green Apple	48 PR
80402	Solid Flexible Sole Tread	Child/Sm Adult	Yellow	48 PR
80403	Solid Flexible Sole Tread	Medium	Blue	48 PR
80404	Solid Flexible Sole Tread	Large	Beige	48 PR
80406	Solid Flexible Sole Tread	X-Large	Grey	48 PR
80408	Solid Flexible Sole Tread	2X-Large	Moss Green	48 PR



Care-Steps II (left) and Care-Steps III (right)



Care-Steps® II and III – Hard Sole LATEX FREE

CARE-STEPS® II

- Low cut
- Multiple colors
- Terry side out upper

CARE-STEPS® III

- Ankle cut
- Adult sizes
- Terry side out upper

CATALOG NUMBER		DESCRIPTION	SIZE	COLOR	QTY/CASE
CARE-STEPS II	CARE STEPS III				
80210		Hard Sole, Terry Upper	Toddler 4-5	White	60 PR
80211		Hard Sole, Terry Upper	Toddler 6-7	White	60 PR
80201		Hard Sole, Terry Upper	Child 8-10	Yellow	60 PR
80202		Hard Sole, Terry Upper	Child 11-13	Yellow	60 PR
80203		Hard Sole, Terry Upper	Child 1-3	Yellow	60 PR
80204	80304	Hard Sole, Terry Upper	Adult 5-6	Beige	60 PR
80205	80305	Hard Sole, Terry Upper	Adult 6-7	Beige	60 PR
80207	80306	Hard Sole, Terry Upper	Adult 7-8	Beige	60 PR
80208	80308	Hard Sole, Terry Upper	Adult 9-10	Beige	60 PR
80209	80309	Hard Sole, Terry Upper	Adult 11-12	Beige	60 PR
80213		Hard Sole, Terry Upper	Adult 13	Beige	60 PR

All Care-Steps III are Blue and packaged 48 PR/Case.

Guardian™ Light Compression Arm Protective Garment LATEX FREE

- Helps improve blood flow
- Relieves aches and pains
- Protects skin
- Available in 3 colors



White



Light Beige



Dark Beige

CAT #	UPPER ARM CIRCUMFERENCE	WEIGHT	SIZE	COLOR	QTY/CASE
39001B	Less than 10"	Less than 100 lbs	Small	Light Beige	12 PR
39002B	10" to 12"	100 to 135 lbs	Medium	Light Beige	12 PR
39003B	12" to 14"	135 to 185 lbs	Large	Light Beige	12 PR
39004B	14" to 18"	185 lbs and over	X-Large	Light Beige	12 PR
39001W	Less than 10"	Less than 100 lbs	Small	White	12 PR
39002W	10" to 12"	100 to 135 lbs	Medium	White	12 PR
39003W	12" to 14"	135 to 185 lbs	Large	White	12 PR
39004W	14" to 18"	185 lbs and over	X-Large	White	12 PR
39001D	Less than 10"	Less than 100 lbs	Small	Dark Beige	12 PR
39002D	10" to 12"	100 to 135 lbs	Medium	Dark Beige	12 PR
39003D	12" to 14"	135 to 185 lbs	Large	Dark Beige	12 PR
39004D	14" to 18"	185 lbs and over	X-Large	Dark Beige	12 PR

Guardian™ Standard Arm Protective Garment LATEX FREE

- One size fits most
- Available in 3 colors
- Protects skin
- Machine washable

CAT #	DESCRIPTION	SIZE	COLOR	QTY/CASE
59301	Protective Garment, Arm	Universal	White	12 PR
59301B	Protective Garment, Arm	Universal	Light Beige	12 PR
59301D	Protective Garment, Arm	Universal	Dark Beige	12 PR



White



Light Beige



Dark Beige



Light Beige



Dark Beige



Guardian™ Lymphedema Protective Garment LATEX FREE

- Moderate compression
- Machine washable
- Available in 2 colors

CAT #	DESCRIPTION	SIZE	COLOR	QTY/CASE
59001-1B	Lymphedema Garment, Arm	Small	Light Beige	6 PR
59001-2B	Lymphedema Garment, Arm	Medium	Light Beige	6 PR
59001-3B	Lymphedema Garment, Arm	Large	Light Beige	6 PR
59001-1D	Lymphedema Garment, Arm	Small	Dark Beige	6 PR
59001-2D	Lymphedema Garment, Arm	Medium	Dark Beige	6 PR
59001-3D	Lymphedema Garment, Arm	Large	Dark Beige	6 PR

Guardian™ Hip Protective Garment LATEX FREE

- Two high density hip pads
- Machine washable
- Knit-in waistband
- Anti-microbial finish

CAT #	DESCRIPTION	HIP MEASUREMENTS	SIZE	COLOR	QTY/CASE
38022-02	Protective Garment, Hip	30" to 38" (Less than 130 lbs)	Small	White	24 EA
38022-03	Protective Garment, Hip	38" to 44" (130-150 lbs)	Medium	White	24 EA
38022-04	Protective Garment, Hip	44" to 54" (150 - 180 lbs)	Large	White	24 EA



Dual Density Garment



Vented Cuff Garment

Guardian™ Joint Protective Garments LATEX FREE

DUAL DENSITY

- Absorbs shock
- Anti-microbial finish
- Protects skin

PADDED SLEEVE

- Lightweight padding
- Manages moisture
- Protects skin

VENTED CUFF

- Maximum breathability
- Adjustable strap
- Protects skin

CAT #	DESCRIPTION	SIZE	COLOR	QTY/CASE
42000	Dual Density, Heel/Elbow/Knee	Small/Medium	White/Aqua	12 EA
43000	Dual Density, Heel/Elbow/Knee	Large	White/Dark Purple	12 EA
44000	Dual Density, Heel/Elbow/Knee	X-Large	White/Maroon	12 EA
35000	Padded Sleeve, Heel/Elbow	Small	White/Yellow	12 EA
36000	Padded Sleeve, Heel/Elbow	Medium	White/Blue	12 EA
37000	Padded Sleeve, Heel/Elbow	Large	White/White	12 EA
38000	Padded Sleeve, Heel/Elbow	X-Large	White/Green	12 EA
31000	Vented Cuff, Heel/Elbow	Universal	N/A	12 EA



Padded Sleeve Garment

Guardian™ Leg Protective Garment LATEX FREE

- One size fits most
- Available in 2 colors
- Protects skin
- Machine washable

CAT #	DESCRIPTION	SIZE	COLOR	QTY/CASE
B59318	Leg Protection Garment	Universal	Beige	12 PR
W59318	Leg Protection Garment	Universal	White	12 PR



White

Beige



Guardian™ Fluid-Resistant Protective Garment LATEX FREE

- Waterproof material
- Reusable
- Adjustable strap
- Two sizes

CAT #	DESCRIPTION	SIZE	COLOR	QTY/CASE
54002	Fluid-Resistant, Arm	9" x 36"	Blue	24 EA
54004	Fluid-Resistant, Leg	12" x 48"	Blue	24 EA

Breeze



Breathable Patient Positioner

Who is Breeze Patient Positioner for?

- Facilities dealing with staff injuries to arm/shoulder or back, as a result of repositioning patients/residents
- Personnel using bedpads to reposition patients/residents
- Patients/residents not fully benefiting from the desired effects of their pressure redistribution surfaces due to unnecessary layering of products
- Patients/residents requiring assistance with bed mobility
- Healthcare facilities with budgetary constraints

CAT #	DESCRIPTION	DIMENSIONS	WEIGHT
50000-PTD	Breeze Slider Sheet, Standard	40" x 72"	15.9 OZ
50000-PTDB	Breeze Slider Sheet, Bariatric	47" x 72"	20.4 OZ

FEATURES AND BENEFITS

- Quality 50/50 cotton/polyester twill surface provides patient comfort and reduces the risk of shearing friction
- Low-friction backing allows staff to reposition patients safely and easily
- Breathable taffeta backing avoids heat buildup under patients
- Generous sizing provides maximum support

Note: Breeze can be washed along with regular bed linens.



Load Force Test (Lab and Hospital Tested)

Objective: To determine the force required to initiate and continue moving a 200 lb object on a hospital bed using a fixed apparatus.

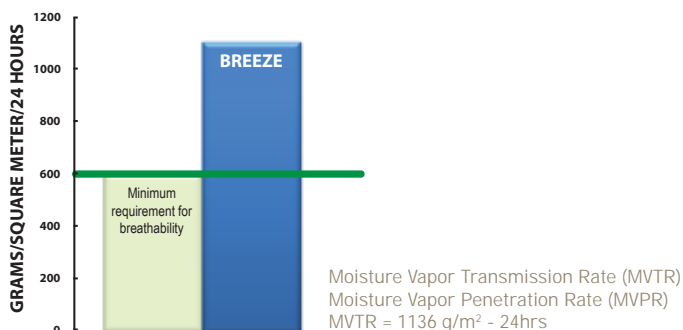
ITEM	Initiate Slide	%	Keep Sliding	%
Drawsheet	65.1 lbs	Base	50 lbs	Base
Underpad	45 lbs	-31%	30 lbs	-40%
Breeze	38.2 lbs	-41%	19 lbs	-62%
Competitor B	38.2 lbs	-41%	26 lbs	-48%
Competitor C	45 lbs	-31%	22 lbs	-56%

Conclusion: Breeze reduces the force required to move and continue moving a patient on a hospital bed by 62%, therefore reducing the overall strain on the caregiver.

Findings obtained from an independent laboratory study. Competitor names not available to the public.

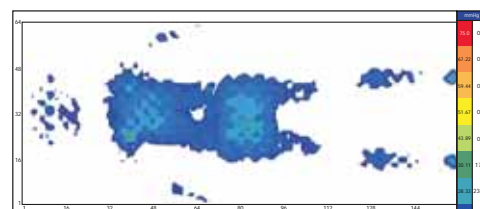
Breathability

Reduces the risk of heat and moisture build-up under the patient, enhancing comfort.

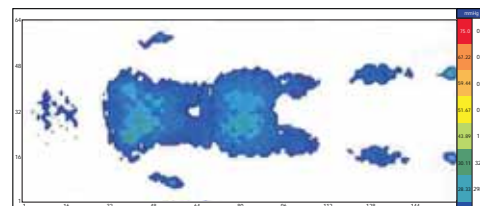


Pressure Mapping

Breeze's thin profile should not impair the performance of pressure redistribution mattress, and can therefore remain beneath patients, at all times — so it's always there when you need it.



Male, 68 years old, 6'10" tall, 190 lbs, back lie flat
Average pressure = 18.02 Peak pressure = 43.4



Male, 68 years old, 6'10" tall, 190 lbs, back lie flat
Average pressure = 18.84 Peak pressure = 44.95



Wound & Skin Care

Encompass understands maintaining skin integrity and proper wound care management is essential to infection prevention and shorter hospital stays. As a demonstrated market share leader with several patented technologies, we are committed to providing the highest quality latex-free products to improve comfort, promote compliance and insure the best possible outcome for all patients.

STOCKINETTE

The Albahealth® patented Speed-Roll® application system features convenient pull-tabs pre-rolled in the stockinette to reduce contact with patient extremity. They offer a wide array of sizes and configurations to address your entire stockinette needs.

DRESSINGS

Albahealth® offers a wide variety of options to address patient wound care needs including: Packing Strips, Permeable Non-Adhering and Petrolatum Gauze Dressings. Petrolatum Dressings are delivered in an innovative packaging for improved convenience and less mess. An oil-resistant paper wrap folded over the dressing protects it within the peel-open foil-lined pouch and greatly simplifies handling.

DRESSING RETAINERS

Albahealth® X-Span® technology offers greater fabric stretch to accommodate more uses and a marked reduction in lint. Dressing changes are easier, faster

and more comfortable when using tubular dressing retainers. They hold wet or dry dressings in place without skin irritation that can be caused by tape.

WASHCLOTHS/CLEANERS

The Encompass family of disposable and limited-use washcloths and cleaners provide a cloth-like feel for delicate skin in styles from the Cubby Cleaners® for infants to Wash Pack® pre-moistened washcloths which are perfect for head to toe clean-up.

INCONTINENT PADS

Surface dryness is essential to maintaining skin integrity. Encompass offers a wide variety of synthetic-faced incontinent pads for improved wicking and moisture management. Their bonded construction offers the highest resistance to bunching and wrinkles, reducing the chance for shearing and excess pressure.

AVCOR COMPRESSION BANDAGES

The patented knit construction and elastomer design of their self-adhesive compression bandages provides controlled compression and ease of application eliminating the need for metal clips or tapes. These bandages securely adhere anywhere along the wrap and ensure desired compression.





Non-Sterile Bias Cut Cotton

LATEX
FREE

CAT #	DESCRIPTION	SIZE	COLOR	QTY/CASE
720	Cotton, Bias Cut	2" x 50 yds	Natural	12 EA
730	Cotton, Bias Cut	3" x 50 yds	Natural	12 EA
740	Cotton, Bias Cut	4" x 50 yds	Natural	10 EA
750	Cotton, Bias Cut	5" x 50 yds	Natural	6 EA
760	Cotton, Bias Cut	6" x 50 yds	Natural	6 EA
780	Cotton, Bias Cut	8" x 50 yds	Natural	4 EA

Non-Sterile Tubular Cotton

LATEX
FREE

CAT #	DESCRIPTION	SIZE	COLOR	QTY/CASE
81220	Cotton, Tubular	2" x 25 yds	Natural	12 EA
81320	Cotton, Tubular	3" x 25 yds	Natural	12 EA
81420	Cotton, Tubular	4" x 25 yds	Natural	10 EA
81520	Cotton, Tubular	5" x 25 yds	Natural	6 EA
81620	Cotton, Tubular	6" x 25 yds	Natural	6 EA
81820	Cotton, Tubular	8" x 25 yds	Natural	4 EA
81920	Cotton, Tubular	10" x 25 yds	Natural	4 EA
81120	Cotton, Tubular	12" x 25 yds	Natural	2 EA

NEW TECHNOLOGIES PROVIDE SUPERIOR
ODOR AND MOISTURE MANAGEMENT

Albahealth's innovative blend of polyester and Cool-Wick™ with embedded anti-microbial yarns provides aggressive odor and moisture management.

Performance testing reveals this product absorbs 95% faster than untreated polyester which helps prevent bacteria and promote healthier skin.

Non-Sterile Tubular Synthetic

LATEX
FREE

- Standard
- Anti-microbial

CAT #	DESCRIPTION	SIZE	COLOR	QTY/CASE
86212	Synthetic, Tubular	2" x 25 yds	White	12 EA
86312	Synthetic, Tubular	3" x 25 yds	White	12 EA
86412	Synthetic, Tubular	4" x 25 yds	White	10 EA
86512	Synthetic, Tubular	5" x 25 yds	White	6 EA
86612	Synthetic, Tubular	6" x 25 yds	White	6 EA
86812	Synthetic, Tubular	8" x 25 yds	White	4 EA
86912	Synthetic, Tubular	10" x 25 yds	White	4 EA
86112	Synthetic, Tubular	12" x 25 yds	White	2 EA
89220	Synthetic, Tubular, Anti-Microbial	2" x 25 yds	White	12 EA
89230	Synthetic, Tubular, Anti-Microbial	3" x 25 yds	White	12 EA
89240	Synthetic, Tubular, Anti-Microbial	4" x 25 yds	White	10 EA
89250	Synthetic, Tubular, Anti-Microbial	5" x 25 yds	White	6 EA
89260	Synthetic, Tubular, Anti-Microbial	6" x 25 yds	White	6 EA
89280	Synthetic, Tubular, Anti-Microbial	8" x 25 yds	White	4 EA
89290	Synthetic, Tubular, Anti-Microbial	10" x 25 yds	White	4 EA
89120	Synthetic, Tubular, Anti-Microbial	12" x 25 yds	White	2 EA



Double-Ply Tubular Speed-Roll® (7143)

Our sterile cotton stockinette provides added comfort in convenient pre-cut sizes. Peel pouch packaging with a low memory CSR wrap provides easy handling, disposal and low waste.

Sterile cotton stockinette is available as: Single-Ply, Double-Ply, Patented Speed-Roll® System and bias cut to meet all your sterile cotton stockinette needs.

Comfort drives compliance and compliance is the key to successful patient outcomes. This product is an ideal extremity drape for: orthopedic surgery, under-cast liners and amputations.

Features:

- 100% cotton
- Multiple sizes

Sterile Single-Ply Tubular Cotton

**LATEX
FREE**

CAT #	DESCRIPTION	SIZE	COLOR	QTY/CASE
7623	Cotton, Tubular	2" x 36"	Natural	40 EA
7633	Cotton, Tubular	3" x 36"	Natural	40 EA
7643	Cotton, Tubular	4" x 36"	Natural	40 EA
7644	Cotton, Tubular	4" x 48"	Natural	36 EA
7645	Cotton, Tubular	4" x 60"	Natural	30 EA
7664	Cotton, Tubular	6" x 48"	Natural	30 EA
7665	Cotton, Tubular	6" x 60"	Natural	30 EA
7666	Cotton, Tubular	6" x 72"	Natural	24 EA
7686	Cotton, Tubular	8" x 72"	Natural	20 EA

Sterile Double-Ply Tubular Cotton

**LATEX
FREE**

CAT #	DESCRIPTION	SIZE	COLOR	QTY/CASE
7723	Cotton, Tubular	2" x 36"	Natural	36 EA
7733	Cotton, Tubular	3" x 36"	Natural	36 EA
7743	Cotton, Tubular	4" x 36"	Natural	24 EA
7744	Cotton, Tubular	4" x 48"	Natural	20 EA
7745	Cotton, Tubular	4" x 60"	Natural	18 EA
7764	Cotton, Tubular	6" x 48"	Natural	18 EA
7765	Cotton, Tubular	6" x 60"	Natural	15 EA
7766	Cotton, Tubular	6" x 72"	Natural	12 EA
7785	Cotton, Tubular	8" x 60"	Natural	12 EA
7786	Cotton, Tubular	8" x 72"	Natural	12 EA

Sterile Double-Ply Tubular Cotton Speed-Roll®

**LATEX
FREE**

CAT #	DESCRIPTION	SIZE	COLOR	QTY/CASE
7143	Cotton, Tubular Speed-Roll	4" x 36"	Natural	18 EA
7144	Cotton, Tubular Speed-Roll	4" x 48"	Natural	18 EA
7164	Cotton, Tubular Speed-Roll	6" x 48"	Natural	18 EA
7165	Cotton, Tubular Speed-Roll	6" x 60"	Natural	12 EA

Sterile Bias Cut Cotton

**LATEX
FREE**

CAT #	DESCRIPTION	SIZE	COLOR	QTY/CASE
8224	Cotton, Bias Cut	2" x 4 yds	Natural	20 EA
8234	Cotton, Bias Cut	3" x 4 yds	Natural	20 EA
8244	Cotton, Bias Cut	4" x 4 yds	Natural	20 EA
8264	Cotton, Bias Cut	6" x 4 yds	Natural	18 EA
8284	Cotton, Bias Cut	8" x 4 yds	Natural	15 EA



Impervious (20630)

Sterile synthetic stockinette offers multiple sizes and styles with a seamless design. The peel pouch packaging with a low memory CSR wrap provides easy handling, disposal and low waste. Sterile synthetic stockinette is available as: Single-Ply, Double-Ply, Impervious and the Patented Speed-Roll® System to meet all your sterile synthetic stockinette needs.

Features:

- Free of foreign material
- Low lint factor
- 100% synthetic
- Multiple sizes

Sterile Single-Ply Tubular Synthetic

LATEX
FREE

CAT #	DESCRIPTION	SIZE	COLOR	QTY/CASE
8023	Synthetic, Tubular	2" x 36"	White	40 EA
8033	Synthetic, Tubular	3" x 36"	White	40 EA
8043	Synthetic, Tubular	4" x 36"	White	40 EA
8044	Synthetic, Tubular	4" x 48"	White	36 EA
8045	Synthetic, Tubular	4" x 60"	White	30 EA
8064	Synthetic, Tubular	6" x 48"	White	30 EA
8065	Synthetic, Tubular	6" x 60"	White	30 EA
8066	Synthetic, Tubular	6" x 72"	White	24 EA
8086	Synthetic, Tubular	8" x 72"	White	20 EA

Sterile Double-Ply Tubular Synthetic

LATEX
FREE

CAT #	DESCRIPTION	SIZE	COLOR	QTY/CASE
8523	Synthetic, Tubular	2" x 36"	White	36 EA
8533	Synthetic, Tubular	3" x 36"	White	36 EA
8543	Synthetic, Tubular	4" x 36"	White	24 EA
8544	Synthetic, Tubular	4" x 48"	White	20 EA
8545	Synthetic, Tubular	4" x 60"	White	18 EA
8564	Synthetic, Tubular	6" x 48"	White	18 EA
8565	Synthetic, Tubular	6" x 60"	White	15 EA
8566	Synthetic, Tubular	6" x 72"	White	12 EA
8586	Synthetic, Tubular	8" x 72"	White	12 EA

Sterile Impervious

LATEX
FREE

CAT #	DESCRIPTION	SIZE	COLOR	QTY/CASE
20630	Impervious	6" x 30"	White/Blue	18 EA
20838	Impervious	8" x 38"	White/Blue	12 EA
85509	Impervious	9" x 48"	White/Blue	12 EA
21048	Impervious	10" x 48"	White/Blue	9 EA
85512	Impervious	12" x 48"	White/Blue	10 EA

Sterile Impervious Speed-Roll®

LATEX
FREE

CAT #	DESCRIPTION	SIZE	COLOR	QTY/CASE
630	Impervious Speed-Roll	6" x 30"	White/Blue	18 EA
838	Impervious Speed-Roll	8" x 38"	White/Blue	12 EA
1048	Impervious Speed-Roll	10" x 48"	White/Blue	9 EA



Sterile Single-Ply Tubular Blended

**LATEX
FREE**

- Single-ply
- 50% cotton, 50% synthetic
- Latex-free

CAT #	DESCRIPTION	SIZE	COLOR	QTY/CASE
2336	Cotton/Synthetic, Tubular	3" x 36"	Light Natural	40 EA
2436	Cotton/Synthetic, Tubular	4" x 36"	Light Natural	40 EA
2448	Cotton/Synthetic, Tubular	4" x 48"	Light Natural	36 EA
2460	Cotton/Synthetic, Tubular	4" x 60"	Light Natural	30 EA
2648	Cotton/Synthetic, Tubular	6" x 48"	Light Natural	30 EA
2660	Cotton/Synthetic, Tubular	6" x 60"	Light Natural	30 EA
2672	Cotton/Synthetic, Tubular	6" x 72"	Light Natural	24 EA

Sterile Double-Ply Tubular Blended

**LATEX
FREE**

- Double-ply
- 50% cotton, 50% synthetic
- Latex-free

CAT #	DESCRIPTION	SIZE	COLOR	QTY/CASE
3336	Cotton/Synthetic, Tubular	3" x 36"	Light Natural	36 EA
3436	Cotton/Synthetic, Tubular	4" x 36"	Light Natural	24 EA
3448	Cotton/Synthetic, Tubular	4" x 48"	Light Natural	20 EA
3460	Cotton/Synthetic, Tubular	4" x 60"	Light Natural	18 EA
3648	Cotton/Synthetic, Tubular	6" x 48"	Light Natural	18 EA
3660	Cotton/Synthetic, Tubular	6" x 60"	Light Natural	15 EA
3672	Cotton/Synthetic, Tubular	6" x 72"	Light Natural	12 EA
3860	Cotton/Synthetic, Tubular	8" x 60"	Light Natural	12 EA
3872	Cotton/Synthetic, Tubular	8" x 72"	Light Natural	12 EA



Sterile Bias Cut Blended

**LATEX
FREE**

- Bias cut
- 50% cotton, 50% synthetic
- Latex-free

CAT #	DESCRIPTION	SIZE	COLOR	QTY/CASE
4034	Cotton/Synthetic Bias Cut	3" x 4 yds	Light Natural	20 EA
4044	Cotton/Synthetic Bias Cut	4" x 4 yds	Light Natural	20 EA
4045	Cotton/Synthetic Bias Cut	4" x 5 yds	Light Natural	20 EA
4064	Cotton/Synthetic Bias Cut	6" x 4 yds	Light Natural	18 EA
4084	Cotton/Synthetic Bias Cut	8" x 4 yds	Light Natural	15 EA



Permeable Non-Adhering Dressings

LATEX
FREE

- Latex-free
- Sterile
- Non-adhering
- Convenient

CAT #	DESCRIPTION	SIZE	COLOR	QTY/CASE
220	Dressing, Permeable	3" x 3"	Neutral	300 EA
221	Dressing, Permeable	3" x 8"	Neutral	144 EA
222	Dressing, Permeable	3" x 8" (3/pk)	Neutral	216 EA
223	Dressing, Permeable	3" x 16"	Neutral	216 EA

Packing Strips

LATEX
FREE

- Latex-free
- Sterile
- Non-adhering
- Convenient

CAT #	DESCRIPTION	SIZE	COLOR	QTY/CASE
260	Dressing, Plain	1/4" x 5 yds	White	12 BTL
261	Dressing, Plain	1/2" x 5 yds	White	12 BTL
262	Dressing, Plain	1" x 5 yds	White	12 BTL
263	Dressing, Plain	2" x 5 yds	White	12 BTL
270	Dressing, Iodoform	1/4" x 5 yds	Natural	12 BTL
271	Dressing, Iodoform	1/2" x 5 yds	Natural	12 BTL
272	Dressing, Iodoform	1" x 5 yds	Natural	12 BTL
273	Dressing, Iodoform	2" x 5 yds	Natural	12 BTL



Petrolatum Gauze



Xeroform Petrolatum Gauze

Petrolatum Gauze Dressings

LATEX
FREE

- Latex-free
- Sterile
- Non-adhering
- Convenient

CAT #	DESCRIPTION	SIZE	COLOR	QTY/CASE
204	Dressing, Petrolatum	1/2" x 72"	Neutral	200 EA
205	Dressing, Petrolatum	1" x 36"	Neutral	200 EA
206	Dressing, Petrolatum	3" x 9"	Neutral	200 EA
207	Dressing, Petrolatum	3" x 18"	Neutral	200 EA
208	Dressing, Petrolatum	3" x 36"	Neutral	200 EA
209	Dressing, Petrolatum	6" x 26"	Neutral	200 EA
210	Dressing, Petrolatum	1" x 8"	Neutral	200 EA
212	Dressing, Xeroform Petrolatum	1" x 8"	Neutral	200 EA
213	Dressing, Xeroform Petrolatum	5" x 9"	Neutral	200 EA



CareNett Dressing Retainer – Natural (CN03)

CareNett® Dressing Retainers

LATEX
FREE

- Advanced memory yarns
- Multiple sizes
- Two-way stretch

CAT #	DESCRIPTION	SIZE	COLOR	QTY/CASE
CN01	Dressing Retainer, CareNett Tubular	1	Natural	1 EA
CN02	Dressing Retainer, CareNett Tubular	2	Natural	1 EA
CN03	Dressing Retainer, CareNett Tubular	3	Natural	1 EA
CN04	Dressing Retainer, CareNett Tubular	4	Natural	1 EA
CN05	Dressing Retainer, CareNett Tubular	5	Natural	1 EA
CN06	Dressing Retainer, CareNett Tubular	6	Natural	1 EA
CN07	Dressing Retainer, CareNett Tubular	7	Natural	1 EA
CN08	Dressing Retainer, CareNett Tubular	8	Natural	1 EA
CN09	Dressing Retainer, CareNett Tubular	9	Natural	1 EA
CN10	Dressing Retainer, CareNett Tubular	10	Natural	1 EA
CN11	Dressing Retainer, CareNett Tubular	11	Natural	1 EA
CN12	Dressing Retainer, CareNett Tubular	12	Natural	1 EA
CN22	Dressing Retainer, CareNett Tubular (stretches to 80")	22	Natural	1 EA

X-Span® Dressing Retainers

LATEX
FREE

- Superior resilience
- Two-way stretch
- Color-coded sizing band

CAT #	DESCRIPTION	SIZE	COLOR	QTY/CASE
821	Dressing Retainer, X-Span Tubular	1	Gold	1 EA
822	Dressing Retainer, X-Span Tubular	2	Olive	1 EA
823	Dressing Retainer, X-Span Tubular	3	Mint	1 EA
824	Dressing Retainer, X-Span Tubular	4	Aqua	1 EA
825	Dressing Retainer, X-Span Tubular	5	Dark Purple	1 EA
826	Dressing Retainer, X-Span Tubular	6	Light Purple	1 EA
827	Dressing Retainer, X-Span Tubular	7	Maroon	1 EA
828	Dressing Retainer, X-Span Tubular	8	Grey	1 EA
830	Dressing Retainer, X-Span Tubular	9/10	Orange	1 EA



X-Span Dressing Retainer – Mint (823)



X-Span Dressing Retainer – Aqua (824)

BURN PADS



Disposable Burn Pads

LATEX
FREE

- Latex-free components
- Highly absorbent
- Moisture barrier backing
- Strong construction
- Sterile
- Individually wrapped
- Single patient use

CAT #	DESCRIPTION	SIZE	COLOR	QTY/CASE
BP#2334	Sterile Burn Pad	23" x 34"	White/Blue	24 EA
BP#3472	Sterile Burn Pad	34" x 72"	White/Blue	8 EA



- Single-use, always fresh
- Cost effective, convenient
- Soft and durable
- Various styles and materials

SofSorb® Washcloths

LATEX FREE

CAT #	DESCRIPTION	SIZE	COLOR	PACKAGING	QTY/CASE
48001	Air Laid, Economy	12" x 13"	White	50/Bag, 20 Bags/Case	1000 EA
48003	Rayon Polyester Spunlace	12" x 13"	White	50/Bag, 20 Bags/Case	1000 EA
48003-010	Air Laid, Heavy 10s	12" x 13"	White	10/Bag, 100 Bags/Case	1000 EA
48005	DRC, Diamond	12" x 12"	Blue	50/Bag, 10 Bags/Case	500 EA
48009	Apertured Rayon	12" x 12"	Blue	50/Bag, 20 Bags/Case	1000 EA
48012	Air Laid, Medium	10" x 12"	White	25/Bag, 20 Perfed Bags/Case	500 EA
48014	Apertured Rayon	12" x 12"	Pink	25/Bag, 20 Bags/Case	500 EA
48015	Air Laid, Medium	10" x 12"	White	50/Bag, 10 Bags/Case	500 EA

Limited Use Towels

LATEX FREE

CAT #	DESCRIPTION	SIZE	COLOR	PACKAGING	QTY/CASE
47930	Softy™ Bath, DRC	18" x 38"	Blue	200 Bulk	200
4910	O R Towel, DRC	14" x 19"	Blue	350 Bulk	350

SofSorb® Cleaners

LATEX FREE

- Single-use, always fresh
- Bulk packs available
- Strong, fast wicking action
- Low lint

CAT #	DESCRIPTION	SIZE	COLOR	PACKAGING	QTY/CASE
10331	Cleaner	9" x 10.5"	White	30/Box, 32 Boxes/Case	960 EA
10331-010	Cubby Cleaners®	9" x 10.5"	White	30/Box, 32 Boxes/Case	960 EA
10331-200	Cleaner, Bulk	9" x 10.5"	White	200/Bag, 10 Bags/Case	2000 EA
10340-030	General Cleaner	7" x 12"	White	40/Box, 40 Boxes/Case	1600 EA
10340-400	General Cleaner, Bulk	12" x 13.5"	White	250/Bag, 8 Bags/Case	2000 EA



Wash Pack® Pre-Moistened Washcloths

LATEX FREE

- Alcohol and fragrance free
- Moisturizing
- Super soft and convenient
- Reusable pack

CAT #	DESCRIPTION	SIZE	COLOR	PACKAGING	QTY/CASE
48500-010	Wash Pack®	9" x 11"	White	36/Pack, 20 Peel Packs/Case	720 EA

Incontinent Care

PATIENT CARE INCONTINENT PADS

Moisture management is important to successful skin integrity in the acute care setting. Quality linens also have a factor in reducing the amount of bunching, pressure, shearing and friction to which patients are exposed.

Not all incontinent pads, whether reusable or disposable, perform the same. Incontinent pads were originally designed to protect the sheets and mattress rather than the patient. Many pads in use today still adhere to this historical design.

We are now more aware of the extent that excess moisture, bunching, pressure, shearing and friction from bed linens and related incontinent products can contribute to skin breakdown and discomfort. A well-designed incontinent pad, along with good nursing care, can help to mitigate all those negative influences.

Construction

Almost all underpads are constructed of a top or “facing” layer, a middle “soaker” layer, and a bottom “barrier” layer. Each has a job to do:

Facing — get moisture away from skin; provide soft, comfortable surface

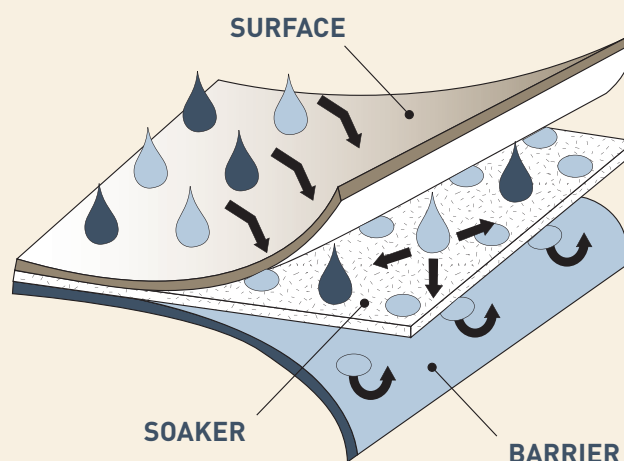
Modern, all-polyester fabrics provide the softness that cotton does, but are designed to wick moisture from the top facing into the soaker level. For best patient care, we recommend a high-performing all-polyester facing, instead of one made from cotton fabric.

Soaker — attract, hold and disperse moisture over multiple voids

A good Patient Care pad will have a minimum of 35% Rayon, which is more effective at drawing the moisture into the soaker and quickly spreading it horizontally. Disposable incontinent pads generally use polymer gels to capture liquids. However, once activated, the gel usually cannot absorb or disperse more liquids on multiple voids like a reusable pad can.

Barrier — keep moisture inside pad; keep pad from slipping down the bed

The best Patient Care pads “bond” their barrier layer to the quilted facing and soaker levels. Bonding ensures that the pad will not bunch on itself, and also makes it more durable and wrinkle-free during the laundering process.



Features of the DermaCare Patient Care Underpad

- Multi-layered composition allows air to circulate
- Virtually eliminates shrinkage
- Eliminates movement between layers
- Reduces pilling
- Lays completely flat without bunching
- Thin profile will not affect performance of pressure redistribution mattresses

The DermaCare Underpad

- Top of the line Patient Care reusable underpad
- Bonded ultra thin pad to help maximize patient care by lying flat to help prevent pressure ulcers
- Ultra lightweight at 14.1oz, DermaCare absorbs up to 4 times its own weight (1,500cc)
- Brushed backing to ensure no movement under the patient to prevent bunching which can lead to pressure ulcers
- Impermeable barrier offers excellent linen protections, eliminating the need for multiple layers and reducing soiled linen



CAT #	SIZE	FACING	SOAKER (POLY/RAYON)	CORNERS	BARRIER
50560-9026	33" x 35"	Light Green	65/35	Round	Light Blue



The Chamonix Bonded Underpad

- Bonded ultra light and thin pad to help maximize patient care by lying flat to help prevent pressure ulcers
- Stay-Dry surface and high absorbency protects patients and bed linens
- Stain resistant
- Therma-Shield Barrier
- Round corners are less susceptible to wear on the edges

CAT #	SIZE	FACING	SOAKER (POLY/RAYON)	CORNERS	BARRIER
50560-410B	34" x 36"	Light Green	65/35	Round	Dark Blue

The Chamonix Underpad

- Provides superior performance on the nursing floor and in the laundry
- Stay-Dry surface and high absorbency protects patients and bed linens
- Stain resistant
- Impermeable Therma-Shield Barrier
- Round corners with surface quilted to soaker in zigzag design are less susceptible to wear on the edges of pad



CAT #	SIZE	FACING	SOAKER (POLY/RAYON)	CORNERS	BARRIER
50560-410	34" x 36"	Light Green	65/35	Round	Gray w/Blue Stripes

The Meridian Underpad

- Stay-Dry surface and high absorbency protects patients and bed linens
- Specially constructed fibers channel fluids down into soaker
- Super absorbent inner soaker keeps patients and beds drier, longer
- Impermeable Therma-Shield Barrier
- Round corners are less susceptible to wear on the edges

CAT #	SIZE	FACING	SOAKER (POLY/RAYON)	CORNERS	BARRIER
50560-610	34" x 36"	Light Blue	65/35	Round	Gray w/Blue Stripes



The Bonded Sonoma Underpad

- Provides superior performance on the nursing floor and in the laundry
- Stay-Dry surface and high absorbency protects patients and bed linens
- Stain resistant
- Round corners with surface quilted to soaker in zigzag design are less susceptible to wear on the edges of pad

CAT #	SIZE	FACING	SOAKER (POLY/RAYON)	CORNERS	BARRIER
50560-113	34" x 36"	Blue	65/35	Round	Blue

The Bonded Aurora Underpad

- Bonded ultra light and thin pad to help maximize patient care by lying flat to help prevent pressure ulcers
- Stay-Dry surface and high absorbency protects patients and bed linens
- Stain resistant
- Round corners with surface quilted to soaker in zigzag design are less susceptible to wear on the edges of pad

CAT #	SIZE	FACING	SOAKER (POLY/RAYON)	CORNERS	BARRIER
50560-213B	34" x 36"	Light Green	65/35	Square	Dark Blue





X-Ten/Honeycomb® Elastic Compression Bandages with Self-Closure



X-Ten/Honeycomb® Latex-Free Elastic Compression Bandages with Self-Closure

X-Ten/Honeycomb® Compression Bandages

- VELCRO® closure each end
- Distinctive knit construction
- Comfortable controlled compression
- Easy to apply, reusable
- Conveniently packaged
- Sterile or non-sterile
- Variety of sizes and colors
- Latex-free has teal ends for easy indication

X-Ten/Honeycomb® Elastic Compression Bandages with Self-Closure

CAT #	DESCRIPTION	SIZE	COLOR	PACKAGING	QTY/CASE
020	Elastic Bandage w/Self-Closure	2" x 210"	Beige	12/Bag, 6 Bags/Case	72 EA
030	Elastic Bandage w/Self-Closure	3" x 210"	Beige	12/Bag, 6 Bags/Case	72 EA
040	Elastic Bandage w/Self-Closure	4" x 210"	Beige	12/Bag, 6 Bags/Case	72 EA
060	Elastic Bandage w/Self-Closure	6" x 210"	Beige	12/Bag, 4 Bags/Case	48 EA
120	Sterile Elastic Bandage w/Self-Closure	2" x 210"	Beige	Peel Pouch	36 EA
130	Sterile Elastic Bandage w/Self-Closure	3" x 210"	Beige	Peel Pouch	36 EA
140	Sterile Elastic Bandage w/Self-Closure	4" x 210"	Beige	Peel Pouch	36 EA
160	Sterile Elastic Bandage w/Self-Closure	6" x 210"	Beige	Peel Pouch	36 EA
2BLU	Beach Bandage w/Self-Closure	2" x 210"	Blue	12/Bag, 6 Bags/Case	72 EA
3BLU	Beach Bandage w/Self-Closure	3" x 210"	Blue	12/Bag, 6 Bags/Case	72 EA
4BLU	Beach Bandage w/Self-Closure	4" x 210"	Blue	12/Bag, 6 Bags/Case	72 EA
6BLU	Beach Bandage w/Self-Closure	6" x 210"	Blue	12/Bag, 4 Bags/Case	48 EA
920	Double-Length Bandage w/Self-Closure	2" x 550"	Beige	Individually Wrapped	36 EA
930	Double-Length Bandage w/Self-Closure	3" x 550"	Beige	Individually Wrapped	36 EA
940	Double-Length Bandage w/Self-Closure	4" x 550"	Beige	Individually Wrapped	36 EA
960	Double-Length Bandage w/Self-Closure	6" x 550"	Beige	Individually Wrapped	24 EA
S940	Sterile Double-Length Bandage w/Self-Closure	4" x 550"	Beige	Peel Pouch	36 EA
S960	Sterile Double-Length Bandage w/Self-Closure	6" x 550"	Beige	Peel Pouch	24 EA

X-Ten/Honeycomb® Latex-Free Elastic Compression Bandages with Self-Closure

LATEX
FREE

CAT #	DESCRIPTION	SIZE	COLOR	PACKAGING	QTY/CASE
593-02LF	Elastic Bandage w/Self-Closure	2" x 210"	Beige	12/Bag, 6 Bags/Case	72 EA
593-03LF	Elastic Bandage w/Self-Closure	3" x 210"	Beige	12/Bag, 6 Bags/Case	72 EA
593-04LF	Elastic Bandage w/Self-Closure	4" x 210"	Beige	12/Bag, 6 Bags/Case	72 EA
593-06LF	Elastic Bandage w/Self-Closure	6" x 210"	Beige	12/Bag, 4 Bags/Case	48 EA
593-12LF	Sterile Elastic Bandage w/Self-Closure	2" x 210"	Beige	Peel Pouch	36 EA
593-13LF	Sterile Elastic Bandage w/Self-Closure	3" x 210"	Beige	Peel Pouch	36 EA
593-14LF	Sterile Elastic Bandage w/Self-Closure	4" x 210"	Beige	Peel Pouch	36 EA
593-16LF	Sterile Elastic Bandage w/Self-Closure	6" x 210"	Beige	Peel Pouch	36 EA
593-94LF	Double Elastic Bandage w/Self-Closure	4" x 550"	Beige	Individually Wrapped	36 EA
593-96LF	Double Elastic Bandage w/Self-Closure	6" x 550"	Beige	Individually Wrapped	24 EA



X-Mark® Latex-Free Esmark Bandage LATEX FREE

CAT #	DESCRIPTION	SIZE	COLOR	PACKAGING	QTY/CASE
23578-033	Non-Sterile	3" x 3 yds	White	Bulk	72 EA
23578-034	Non-Sterile	3" x 4 yds	White	Bulk	72 EA
23578-043	Non-Sterile	4" x 3 yds	White	Bulk	72 EA
23578-044	Non-Sterile	4" x 4 yds	White	Bulk	72 EA
23578-063	Non-Sterile	6" x 3 yds	White	Bulk	72 EA
23578-064	Non-Sterile	6" x 4 yds	White	Bulk	72 EA
23578-133	Sterile	3" x 3 yds	White	Peel Pouch	36 EA
23578-134	Sterile	3" x 4 yds	White	Peel Pouch	36 EA
23578-143	Sterile	4" x 3 yds	White	Peel Pouch	36 EA
23578-144	Sterile	4" x 4 yds	White	Peel Pouch	36 EA
23578-163	Sterile	6" x 3 yds	White	Peel Pouch	36 EA
23578-164	Sterile	6" x 4 yds	White	Peel Pouch	36 EA

- Maximum consistent pressure
- Latex-free
- Talc-free, silicone base
- Won't block, roll-up or curl
- No tacky feel
- Sterile or non-sterile

Adban® Latex-Free Cohesive Compression Bandage LATEX FREE

CAT #	DESCRIPTION	SIZE	COLOR	PACKAGING	QTY/CASE
23578-033	Non-Sterile	3" x 3 yds	White	Bulk	72 EA
23578-034	Non-Sterile	3" x 4 yds	White	Bulk	72 EA
23578-043	Non-Sterile	4" x 3 yds	White	Bulk	72 EA
23578-044	Non-Sterile	4" x 4 yds	White	Bulk	72 EA
23578-063	Non-Sterile	6" x 3 yds	White	Bulk	72 EA
23578-064	Non-Sterile	6" x 4 yds	White	Bulk	72 EA
23578-133	Sterile	3" x 3 yds	White	Peel Pouch	36 EA
23578-134	Sterile	3" x 4 yds	White	Peel Pouch	36 EA
23578-143	Sterile	4" x 3 yds	White	Peel Pouch	36 EA
23578-144	Sterile	4" x 4 yds	White	Peel Pouch	36 EA
23578-163	Sterile	6" x 3 yds	White	Peel Pouch	36 EA
23578-164	Sterile	6" x 4 yds	White	Peel Pouch	36 EA



- Self-adherent, no fasteners needed
- Latex-free, water resistant
- Flexible, will not loosen
- Even consistent pressure
- Sterile or non-sterile



Eban® Cohesive Compression Bandage

- Economical self-adherent bandage
- Sterile or non-sterile

CAT #	DESCRIPTION	SIZE	COLOR	PACKAGING	QTY/CASE
EBAN-020	Non-Sterile – Non-Glare	2" x 5 yds	Beige	12/Bag, 6 Bags/Case	72 EA
EBAN-030	Non-Sterile – Non-Glare	3" x 5 yds	Beige	12/Bag, 6 Bags/Case	72 EA
EBAN-040	Non-Sterile – Non-Glare	4" x 5 yds	Beige	12/Bag, 6 Bags/Case	72 EA
EBAN-060	Non-Sterile – Non-Glare	6" x 5 yds	Beige	12/Bag, 4 Bags/Case	48 EA
EBAN-120	Sterile – Non-Glare	2" x 5 yds	Beige	Peel Pouch	36 EA
EBAN-130	Sterile – Non-Glare	3" x 5 yds	Beige	Peel Pouch	36 EA
EBAN-140	Sterile – Non-Glare	4" x 5 yds	Beige	Peel Pouch	36 EA
EBAN-160	Sterile – Non-Glare	6" x 5 yds	Beige	Peel Pouch	36 EA



Eban® Latex-Free Cohesive Compression Bandage

LATEX
FREE

- Economical self-adherent bandage
- Latex-free
- Sterile or non-sterile

CAT #	DESCRIPTION	SIZE	COLOR	PACKAGING	QTY/CASE
EBAN-01LF	Non-Sterile Latex-Free	1" x 5 yds	Beige	12/Bag, 6 Bags/Case	72 EA
EBAN-02LF	Non-Sterile Latex-Free	2" x 5 yds	Beige	12/Bag, 6 Bags/Case	72 EA
EBAN-03LF	Non-Sterile Latex-Free	3" x 5 yds	Beige	12/Bag, 6 Bags/Case	72 EA
EBAN-04LF	Non-Sterile Latex-Free	4" x 5 yds	Beige	12/Bag, 6 Bags/Case	72 EA
EBAN-06LF	Non-Sterile Latex-Free	6" x 5 yds	Beige	12/Bag, 4 Bags/Case	48 EA
EBAN-2COL	Non-Sterile Latex-Free Color	2" x 5 yds	Assorted	12/Bag, 6 Bags/Case	72 EA
EBAN-3COL	Non-Sterile Latex-Free Color	3" x 5 yds	Assorted	12/Bag, 6 Bags/Case	72 EA
EBAN-4COL	Non-Sterile Latex-Free Color	4" x 5 yds	Assorted	12/Bag, 6 Bags/Case	72 EA
EBAN-6COL	Non-Sterile Latex-Free Color	6" x 5 yds	Assorted	12/Bag, 4 Bags/Case	48 EA
EBAN-12LF	Sterile Latex-Free	2" x 5 yds	Beige	Peel Pouch	36 EA
EBAN-13LF	Sterile Latex-Free	3" x 5 yds	Beige	Peel Pouch	36 EA
EBAN-14LF	Sterile Latex-Free	4" x 5 yds	Beige	Peel Pouch	36 EA
EBAN-16LF	Sterile Latex-Free	6" x 5 yds	Beige	Peel Pouch	36 EA



All products on this page are Avcor products.



X-Econ® Knitted Elastic Compression Bandage

X-Econ® Knitted Elastic Compression Bandage

- Special knit matrix
- Consistent controlled compression
- Breathable yarns
- Available with or without clips
- Sterile or non-sterile
- Latex or latex-free

CAT #	DESCRIPTION	SIZE	COLOR	PACKAGING	QTY/CASE
23599-021	Non-Sterile w/Clips	2" x 161"	Beige	12/Bag, 6 Bags/Case	72 EA
23599-031	Non-Sterile w/Clips	3" x 186"	Beige	12/Bag, 6 Bags/Case	72 EA
23599-041	Non-Sterile w/Clips	4" x 186"	Beige	12/Bag, 6 Bags/Case	72 EA
23599-061	Non-Sterile w/Clips	6" x 186"	Beige	12/Bag, 4 Bags/Case	48 EA
23599-121	Sterile w/Clips	2" x 161"	Beige	Peel Pouch	36 EA
23599-131	Sterile w/Clips	3" x 186"	Beige	Peel Pouch	36 EA
23599-141	Sterile w/Clips	4" x 186"	Beige	Peel Pouch	36 EA
23599-161	Sterile w/Clips	6" x 186"	Beige	Peel Pouch	36 EA
23599-020	Non-Sterile w/Single Self-Closure	2" x 161"	Beige	12/Bag, 6 Bags/Case	72 EA
23599-030	Non-Sterile w/Single Self-Closure	3" x 186"	Beige	12/Bag, 6 Bags/Case	72 EA
23599-040	Non-Sterile w/Single Self-Closure	4" x 186"	Beige	12/Bag, 6 Bags/Case	72 EA
23599-060	Non-Sterile w/Single Self-Closure	6" x 186"	Beige	12/Bag, 4 Bags/Case	48 EA
23599-120	Sterile w/Single Self-Closure	2" x 54"	Beige	Peel Pouch	36 EA
23599-130	Sterile w/Single Self-Closure	3" x 61"	Beige	Peel Pouch	36 EA
23599-140	Sterile w/Single Self-Closure	4" x 61"	Beige	Peel Pouch	36 EA
23599-160	Sterile w/Single Self-Closure	6" x 61"	Beige	Peel Pouch	36 EA

X-Econ® Latex-Free Knitted Elastic Compression Bandage



CAT #	DESCRIPTION	SIZE	COLOR	PACKAGING	QTY/CASE
23599-02LF	Latex-Free Non-Sterile w/Clips	2" x 161"	Beige	12/Bag, 6 Bags/Case	72 EA
23599-03LF	Latex-Free Non-Sterile w/Clips	3" x 186"	Beige	12/Bag, 6 Bags/Case	72 EA
23599-04LF	Latex-Free Non-Sterile w/Clips	4" x 186"	Beige	12/Bag, 6 Bags/Case	72 EA
23599-06LF	Latex-Free Non-Sterile w/Clips	6" x 186"	Beige	12/Bag, 4 Bags/Case	48 EA
23599-12LF	Latex-Free Sterile w/Clips	2" x 161"	Beige	Peel Pouch	36 EA
23599-13LF	Latex-Free Sterile w/Clips	3" x 186"	Beige	Peel Pouch	36 EA
23599-14LF	Latex-Free Sterile w/Clips	4" x 186"	Beige	Peel Pouch	36 EA
23599-16LF	Latex-Free Sterile w/Clips	6" x 186"	Beige	Peel Pouch	36 EA
23599-32LF	Latex-Free Non-Sterile w/Single Self-Closure	2" x 161"	White	12/Bag, 6 Bags/Case	72 EA
23599-33LF	Latex-Free Non-Sterile w/Single Self-Closure	3" x 186"	White	12/Bag, 6 Bags/Case	72 EA
23599-34LF	Latex-Free Non-Sterile w/Single Self-Closure	4" x 186"	White	12/Bag, 6 Bags/Case	72 EA
23599-36LF	Latex-Free Non-Sterile w/Single Self-Closure	6" x 186"	White	12/Bag, 4 Bags/Case	48 EA



Ice Right® Thermal Compression Bandage LATEX FREE

- Integrated bandage & ice pack
- Easy to apply, reusable
- Cold therapy compression
- Self-contained unit

CAT #	DESCRIPTION	SIZE	COLOR	QTY/CASE
11440-100	Thermal Compression Bandage	7" x 97" Stretched	Blue	40 EA

AVCOR IV AIDS

All-in-One® Latex-Free I.V. Arm Support System LATEX FREE

- Easy to apply
- Maximum support
- Reduces waste
- Moisture resistant system
- Unique self-fasteners

CAT #	DESCRIPTION	SIZE	COLOR	PACKAGING	QTY/CASE
18690-100	Neonatal	3" x 1"	White	100/Box, 2 Boxes/Case	200 EA
18690-200	Infant	3" x 2"	White	75/Box, 2 Boxes/Case	150 EA
18690-300	Pediatric	5" x 2"	White	50/Box, 2 Boxes/Case	100 EA
18690-400	Adult Wrist	9" x 3"	White	25/Box, 2 Boxes/Case	50 EA
18690-500	Adult Arm	16" x 3"	White	25/Box	25 EA



X-Tourn® Latex-Free Tourniquet Strap LATEX FREE

- Latex-free, blue color
- Single patient use
- No harsh dyes
- Three sizes available

CAT #	DESCRIPTION	SIZE	COLOR	PACKAGING	QTY/CASE
18679	Tourniquet Flat	1" x 18"	Blue	250/Bag, 4 Bags/Case	1000 EA
18680	Tourniquet Flat	3/4" x 18"	Blue	250/Bag, 4 Bags/Case	1000 EA
18680-PEDI	Tourniquet Flat	3/4" x 12"	Blue	250/Bag, 4 Bags/Case	1000 EA
18679-R	Tourniquet Rolled & Banded	1" x 18"	Blue	250/Bag, 4 Bags/Case	1000 EA
18680-R	Tourniquet Rolled & Banded	3/4" x 18"	Blue	250/Bag, 4 Bags/Case	1000 EA
18679-P	Tourniquet Perforated Roll	1" x 18"	Blue	25/Box, 40 Boxes/Case	1000 EA

Index

A

Adban® Compression Bandages ...	31
All-In-One® Latex-Free I.V. Arm Support System	34
Anti-Embolism Stockings	6-7
• EssentialCARE™ Knee	7
• EssentialCARE™ Thigh.....	7
• UltraCARE™ Knee	7
• UltraCARE™ Thigh	7
• UltraCARE™ Waist.....	7
Apparel, Thermoflect®	9
Aurorra Bonded Underpad	29
AVCOR COMPRESSION BANDAGES	30-34

B

Bandages, Compression.....	30-34
Bandages, Ice Right® Thermal	34
Blankets, Thermoflect®	8-9
Booties, Thermoflect®	9
Bouffant Caps, Thermoflect®	9
Bracelet, Safe-Steps™	11
Breeze Slider Sheets	18
Burn Pads, Disposable	25

C

CareNett® Dressing Retainers	25
Care-Steps® Patient Safety Footwear	
• Double Tread	14
• Hard Sole.....	15
• Risk Management	11
• Single Tread	14
Chamonix Underpads	28
Cleaners, Disposable.....	26
Compression Bandages.....	30-34
Compression Garments.....	16
Compression Stockings	7
Confetti Treads™	
Patient Safety Footwear	11, 13

D

Daisy-Steps™	15
DermaCare Underpad	28
DRESSING RETAINERS	25
DRESSINGS	24
• Packing Strips	24
• Permeable Non-Adhering.....	24
• Petrolatum Gauze	24
Dual Density Protective Garments	17
DVT PREVENTION	5-7
• Intermittent Pneumatic Compression Therapy	5
• Anti-Embolism Stockings ...	6-7

E

Eban® Compression Bandages ...	32
Eco-Fetti Treads™ Patient Safety Footwear	13
Eco-Steps™ Patient Safety Footwear	12
Eco-Steps™ – Fashion Treads® Patient Safety Footwear	12
EssentialCARE™ Anti-Embolism Stockings.....	7

F

FALLS PREVENTION	10
Fall Risk Management Kits	11
Fluid-Resistant Protective Garment	17
Footwear, Patient Safety	11-15
• All-Around Tread.....	11, 13
• Double Tread	11-14
• Single Tread	12-15
• Risk Management	11
• Hard Sole.....	15
• Flexible Sole	15

G

Gown, Thermoflect®	9
Guardian™ Protective Garments.....	16-17
• Arm.....	16
• Hip	17
• Joint.....	17
• Leg.....	17
• Light Compression, Arm.....	16
• Lymphedema, Arm.....	16

H

HYPOTHERMIA PREVENTION.....	8
• Thermoflect® Heat Reflective Technology	8
• Apparel, Infant, Pediatric, and Adult	9
• Blankets	8-9
• Procedure Packs	8
• Pulse Oximeter Mitt	9
• Papoose	9
• Leg coverings	8-9
• Transport Cocoon.....	9

I

Ice Right® Thermal Compression Bandage	34
INCONTINENT CARE	27-29
• DermaCare Underpad.....	28
• Chamonix Bonded Underpad..	28
• Chamonix Underpad	28
• Meridian Underpad	29
• Bonded Sonoma Underpad...	29
• Bonded Aurorra Underpad ...	29
Intermittent Pneumatic Compression Therapy.....	5
I.V. AIDS.....	34

J

Jackets, Thermoflect® Pediatric	9
--------------------------------------	---

Continued on next page ...

Index

- L**
- Leg Coverings, Thermoflect® 8-9
 - Limited Use Towels26
 - Lymphedema Garment, Arm16
- M**
- Magnets, Safe-Steps™11
 - Meridian Underpad.....29
- N**
- NxSTAR® Intermittent Pneumatic Compression Therapy5
 - NxSTAR® Pump5
 - NxSTAR® Calf Wraps5
 - NxSTAR® Foot Wraps5
- P**
- Packing Strips.....24
 - Padded Sleeve Protective Garment17
 - Pants, Thermoflect® Pediatric.....9
 - Papoose, Thermoflect®9
 - PATIENT POSITIONERS18
 - Breeze Slider Sheet18
 - PATIENT SAFETY FOOTWEAR..... 12-15
 - Permeable Non-Adhering Dressings24
 - Petrolatum Gauze Dressings.....24
 - Pre-Moistened Washcloths26
 - Procedure Packs, Thermoflect®8
 - PROTECTIVE GARMENTS 16-17
 - Pulse Oximeter Mitt, Thermoflect®9
 - PuISTAR® Intermittent Pneumatic Compression Therapy.....5
- R**
- RISK MANAGEMENT 4-18
 - DVT Prevention..... 5-7
 - Hypothermia Prevention 8-9
 - Falls Prevention 10-15
 - Protective Garments 16-17
 - Patient Positioners.....18
- S**
- Safe-Steps™ Fall Risk Management Kits11
 - Safe-T Treads™ – Flexible Sole15
 - Slider Sheets.....18
 - SofSorb® Cleaners.....26
 - SofSorb® Washcloths.....26
 - Sonoma Bonded Underpad29
 - Speed-Roll® Stockinette..... 21-22
 - Stickers, Safe-Steps™11
 - STOCKINETTE 20-23
 - Anti-Microbial.....20
 - Non-Sterile.....20
 - Sterile 21-23
 - Stockings, Anti-Embolism..... 6-7
- T**
- Terry Treads®14
 - Thermal Compression Bandage...34
 - TherMuff, Thermoflect®9
 - Thermoflect® Heat Reflective Technology8
 - Apparel, Pediatric and Adult...9
 - Blankets 8-9
 - Procedure Packs8
 - Pulse Oximeter Mitt9
 - Papoose9
 - Leg coverings 8-9
 - Transport Cocoon.....9
 - Tourniquets34
 - Towels, Limited Use.....26
 - Transport Cocoon, Thermoflect®...9
- U**
- Universal Treads™13
 - UltraCARE™ Anti-Embolism Stockings.....7
 - Underpads..... 28-29
- V**
- Vented Cuff Protective Garment..17
- W**
- WASHCLOTHS & CLEANERS.....26
 - Washcloths, Disposable26
 - Wash Pack Pre-Moistened Washcloths26
 - WOUND & SKIN CARE 19-34
- X**
- X-Econ® Compression Bandages .33
 - X-Span® Dressing Retainers25
 - X-Ten/Honeycomb® Compression Bandages30
 - X-Tourn® Tourniquets34
 - X-Mark® Latex-Free Esmark Bandages31

Trademark Acknowledgements

Cool-Wick™
Sapona Manufacturing Company, Inc.
CORPORATION NORTH CAROLINA
PO Box 128 2478, Cedar Falls Rd.
Cedar Falls, NORTH CAROLINA 27230

Breeze™
MIP, Inc Montreal, Canada

Avcor, X-Ten/Honeycomb, X-Mark, Adban,
Eban, X-Econ, Ice Right, All-In-One, X-tourn
AVCOR HEALTH CARE PRODUCTS, INC.
CORPORATION TEXAS
1520 Everman Parkway
Fort Worth, TEXAS 76140

Velcro®
Velcro Industries
B.V. LTD LIAB CO NETHERLANDS
Castorweg 22-24
Curacao, NETHERLD ANTILLES



GLOBAL MANUFACTURING AND SOURCING

Encompass has assembled a key team of manufacturing and sourcing professionals with over 150 years of combined experience in global operations. Whether its high-tech knitting of anti-embolism stockings in Tennessee, or sourcing the latest woven and non-woven fibers and fabrics from around the world, team members are strategically located throughout the supply chain, allowing us to bring the best products we can to our customers.

In addition to our domestic manufacturing and warehousing, we operate in more than 20 countries around the world. Our long-term international partnerships result in providing you consistent product quality and reliable service at an unmatched value.

We've built a team of more than 700 dedicated professionals who specialize in all aspects of customer care including sales representatives, customer service representatives, clinical product and education resources and interior designers.

NORTH AMERICAN LOCATIONS AND DISTRIBUTION CENTERS


Muscle Shoals, Alabama
Glendale, California
Conyers, Georgia
McDonough, Georgia
Rome, Georgia
Lake Forest, Illinois
Libertyville, Illinois
Mundelein, Illinois
St. Paul, Minnesota
Sparks, Nevada
Rockwood, Tennessee
Addison, Texas
McAllen, Texas



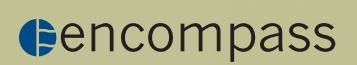
Encompass Corporate Office



Encompass Domestic Manufacturing /Distribution Facilities

 **encompass**

www.encompassgroup.net



615 Macon Street
McDonough, GA 30253
800-245-4636
www.encompassgroup.net

Lit# AC09101-Rev 3/11