




PROFESSIONAL APPAREL

 **encompass®**

Better care starts
with safety and comfort.



ENCOMPASS. FIRST IN SAFETY AND COMFORT.

From coordinated apparel and comforting textiles, to innovative patient care solutions that drive compliance and improve patient outcomes, we partner with our valued customers to create warm, welcoming and healing environments.

For nearly a century, Encompass has been helping healthcare and hospitality organizations create safe, comfortable environments for patients, staff, residents and guests.

Whether developing advanced technologies for the prevention of hypothermia and deep vein thrombosis, helping hospitals reduce the spread of infections, or designing interiors for new, state-of-the-art retirement communities, we offer a complete line of products, services and education programs that meet the challenges our customers face every day.

Other catalogs available:

- Operating Room
- Patient Care
- Patient Room
- Personal Protective Equipment





We're focused on comfort, style and performance so you can focus on care.

Encompass provides our healthcare partners with a wide array of fashionable and functional professional apparel.

COMFORT

Comfort is essential in today's challenging healthcare environments and Encompass delivers with products such as Synergy™ Professional Apparel and Super-Soft Evolution™ Nonwoven Apparel.

STYLE

Encompass offers an extensive collection of style-focused professional apparel designs for Men, Women, Unisex and Juniors.

PERFORMANCE

Whether facing physical or environmental demands, Encompass has solutions that can help.

Our X-STATIC™ Labcoat helps protect staff and patients from harmful cross-contamination utilizing Silver SafeCare® with antimicrobial technology.

The A.M.P.S.™ (Albahealth Medical Performance System) product line is specifically designed to promote foot and leg health for clinicians.

Table of Contents

STAFF APPAREL	2
Reusable Apparel	3
Nonwoven Apparel	14
LAB APPAREL	17
Professional Labcoats	18
Nonwoven Lab Apparel	25
PERFORMANCE PRODUCTS	28
Leg Health	29
Foot Health	31

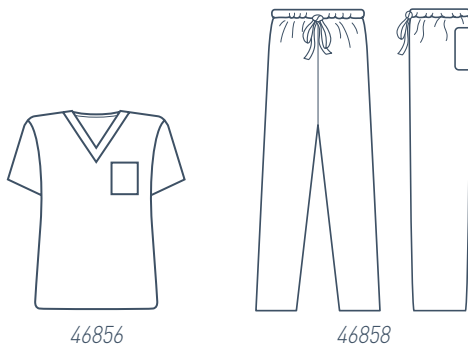


Staff Apparel

Encompass offers an extensive line of comfort-focused staff apparel. From stylish reusable apparel to versatile nonwoven solutions, we feature high quality designs for virtually every point of care within your facility.



Synergy Unisex V-Neck Tunic
(46856 – Teal)



synergy

Synergy™ professional apparel perfectly blends durability and value with a fashionable variety of styles and colors. All styles are made of Synergy fabric, a durable blend that is comfortable, opaque and quick drying. Synergy fabric is a polyester/cotton blend that offers minimal shrinkage and is fade and wrinkle resistant. Additionally, a stain release finish has been added to enhance performance and keep the fabric looking fresh and new. The features of Synergy professional apparel make it an ideal choice when laundering and processing performance are your number one priority.

Synergy Unisex V-Neck Tunic

- Reversible
- Left breast pocket
- Reinforced neck placket
- Color-coded neck binding
- Sizes: XS-8XL

Synergy Unisex Drawstring Pant

- Reversible
- Left hip pocket
- Color-coded webbed belt
- Sizes: XS-8XL

STYLE #	DESCRIPTION	COLORS
46856	Synergy Unisex V-Neck Tunic	Available in all colors listed below.
46858	Synergy Unisex Drawstring Pant	Available in all colors listed below.

COLOR SWATCHES & CODES

10 White	13 Jade Green	SB Sapphire Blue	SG Silver Gray	RB Regatta Blue
11 Ceil	1L Teal	HT Hunter	DS Deep Sea Green	
12 Misty Green	1N Navy	SM Sunset Maroon	IP Imperial Purple	

SIZE CODES

1 XS	7 Large	3X 3XL	6X 6XL
3 Small	9 XL	4X 4XL	7X 7XL
5 Medium	2X 2XL	5X 5XL	8X 8XL

HOW TO ORDER STYLE # + **10** COLOR CODE + **1** SIZE CODE = CATALOG NUMBER



Synergy Unisex Warm-Up Jacket (46859 – Imperial Purple)

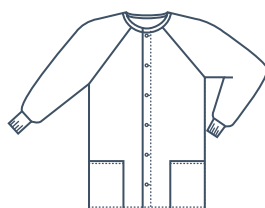
Synergy™ Unisex Warm-Up Jacket

- Raglan sleeves
- Two lower hip pockets
- Scissors holder in right pocket
- Coordinating knit cuffs
- Snap front
- Color-coded tab for easy identification
- Sizes: XS-8XL

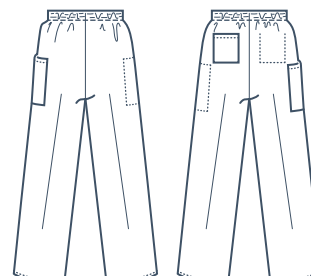
Synergy Women's Elastic Waist Cargo Pant

- Reversible
- 1½" no-roll elastic waist
- Left hip pocket and right cargo pocket
- Color-coded thread on waistband
- Sizes: XS-5XL

STYLE #	DESCRIPTION	COLORS
46859	Synergy Unisex Warm-Up Jacket	Available in all colors listed below.
46857	Synergy Women's Elastic Waist Cargo Pant	Available in all colors listed below.



46859



46857

COLOR SWATCHES & CODES

10 White	13 Jade Green	SB Sapphire Blue	SG Silver Gray	RB Regatta Blue
11 Ceil	1L Teal	HT Hunter	DS Deep Sea Green	
12 Misty Green	1N Navy	SM Sunset Maroon	IP Imperial Purple	

HOW TO ORDER STYLE # + **10** COLOR CODE + **1** SIZE CODE = CATALOG NUMBER



Above: Synergy Women's Crossover Tunic (46851 – Teal)
Below: Synergy Women's Snap-V Tunic (46853 – Hunter)



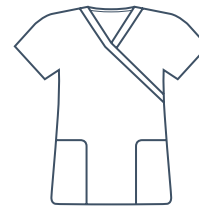
Synergy™ Women's Crossover Tunic

- Pullover style with secured overlap neck
- Two lower hip pockets
- Scissors holder in right pocket
- Color-coded tab for easy identification
- Sizes: XS-5XL

Synergy Women's Snap-V Tunic

- Snap front
- Two lower hip pockets
- Scissors holder in right pocket
- Color-coded tab for easy identification
- Sizes: XS-5XL

STYLE #	DESCRIPTION	COLORS
46851	Synergy Women's Crossover Tunic	Available in all colors listed below.
46853	Synergy Women's Snap-V Tunic	Available in all colors listed below.



46851



46853

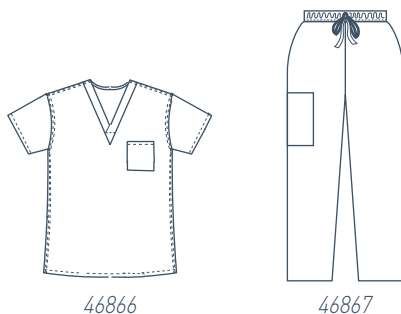
SIZE CODES

1	XS	7	Large	3X	3XL	6X	6XL
3	Small	9	XL	4X	4XL	7X	7XL
5	Medium	2X	2XL	5X	5XL	8X	8XL

HOW TO ORDER STYLE # + 10 COLOR CODE + 1 SIZE CODE = CATALOG NUMBER



SynergyOne Unisex Top and SynergyOne Unisex Pant
(46866, 46867 – Camo Print)



synergyone ★★★★★

Real scrubs. Real performance.

Introducing Synergy™ with an edge – a new concept in professional apparel. Encompass has combined the performance and durability of our Synergy line of professional apparel with the distinct camouflage pattern worn by service personnel to create SynergyOne™ apparel.

SynergyOne Unisex Top

- Left breast pocket
- Reinforced neck placket
- 65/35 polyester/cotton blend with soil release
- Sizes: XS-8XL

SynergyOne Unisex Pant

- 19" leg opening
- 31" inseam
- Drawstring waist
- Back hip and cargo pocket
- 65/35 polyester/cotton blend with soil release
- Sizes: XS-8XL

STYLE #	DESCRIPTION	COLOR
46866	SynergyOne Unisex Top (Sizes 6XL-8XL are available through special order only)	 Camo Print
46867	SynergyOne Unisex Pant (Sizes 6XL-8XL are available through special order only)	 Camo Print



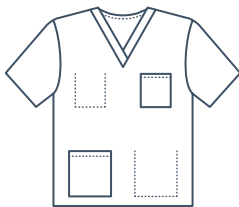
SIZE CODES

1	XS	7	Large	3X	3XL	6X	6XL
3	Small	9	XL	4X	4XL	7X	7XL
5	Medium	2X	2XL	5X	5XL	8X	8XL

HOW TO ORDER STYLE # + 10 COLOR CODE + 1 SIZE CODE = CATALOG NUMBER



Essentials Unisex V-Neck Tunic
(46877 – Navy)



46876



46877

essentials

Essentials™ staff apparel is made from a lightweight yet durable cotton/polyester fabric and is designed for comfort and breathability at a cost effective price. Additionally, to ensure colorfastness wash after wash, Essentials professional apparel is disperse vat dyed. Essentials are available in two color code systems to meet your size identification needs. Reference color code chart on page 9.

Essentials Unisex V-Neck Tunic with Lower Pocket

- Reversible top with set-in sleeves
- Left breast pocket
- Lower right hip pocket with scissors tape
- Size code printed color-coded neck binding
- Sizes: XS-5XL

Essentials Unisex V-Neck Tunic

- Reversible top with set-in sleeves
- Left breast pocket
- Size code printed color-coded neck binding
- Sizes: XS-5XL

STYLE #	DESCRIPTION	COLORS
---------	-------------	--------

ENCOMPASS COLOR CODE SERIES

46876-1	Essentials Unisex V-Neck Tunic with Lower Pocket	Available in all -1 colors listed below.
46877-1	Essentials Unisex V-Neck Tunic	Available in all -1 colors listed below.

UNIVERSAL COLOR CODE SERIES

46876-2	Essentials Unisex V-Neck Tunic with Lower Pocket	Available in all -2 colors listed below.
46877-2	Essentials Unisex V-Neck Tunic	Available in all -2 colors listed below.

COLOR SWATCHES & CODES

ENCOMPASS (-1) SERIES	11	Ceil	12	Misty Green	13	Jade Green	1L	Teal	1N	Navy
UNIVERSAL (-2) SERIES	21	Ceil	22	Misty Green	23	Jade Green	2L	Teal	2N	Navy

HOW TO ORDER STYLE # + 10 COLOR CODE + 1 SIZE CODE = CATALOG NUMBER



Above: Essentials Unisex Warm-Up Jacket (46879 – Ceil Blue)
Below: Essentials Unisex Drawstring Pant (46878 – Misty Green)



Essentials™ Unisex Warm-Up Jacket

- Raglan jacket with snap front
- Scissors holder in right pocket
- Can be used with Encompass or Universal color-coded apparel
- Two lower pockets
- Coordinating knit cuffs
- Sizes: XS-5XL

Essentials Unisex Drawstring Pant

- Reversible
- Color-coded web belt
- Right hip pocket
- Sizes: XS-5XL

Essentials Women's Elastic Waist Pant

- 1½" no-roll elastic waist
- Color-coded thread on waistband
- Reversible
- Sizes: XS-5XL

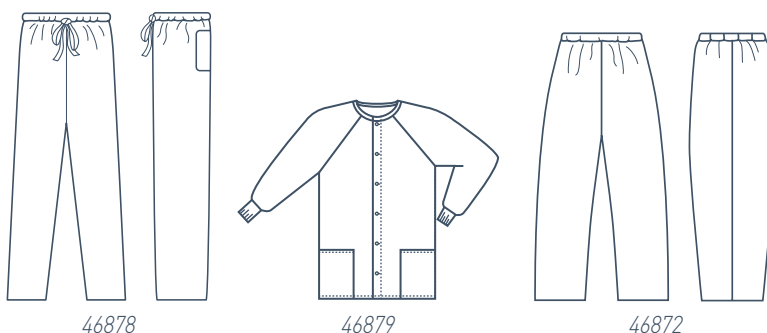
STYLE #	DESCRIPTION	COLORS
46879	Essentials Unisex Warm-Up Jacket	Available in all -2 colors.

ENCOMPASS COLOR CODE SERIES

46878-1	Essentials Unisex Drawstring Pant	Available in all -1 colors.
46872-1	Essentials Women's Elastic Waist Pant	Available in all -1 colors.

UNIVERSAL COLOR CODE SERIES

46878-2	Essentials Unisex Drawstring Pant	Available in all -2 colors.
46872-2	Essentials Women's Elastic Waist Pant	Available in all -2 colors.



SIZE CODES

1	XS	3	Small	5	Medium	7	Large	9	XL
2X	2XL	3X	3XL	4X	4XL	5X	5XL		

HOW TO ORDER STYLE # + 10 COLOR CODE + 1 SIZE CODE = CATALOG NUMBER

Color Coding and Sizing

ENCOMPASS WOMEN'S SYNERGY™ PROFESSIONAL APPAREL

Size / Size Code	S / 3	M / 5	L / 7	XL / 9	2XL / 2X	3XL / 3X	4XL / 4X	5XL / 5X
Bust	35-38	39-41	42-45	46-49	50-53	54-57	58-61	62-65
Waist	25-27	28-30	31-34	35-38	39-42	43-45	46-48	49-52
Hips	36-39	40-42	43-45	46-49	50-53	54-57	58-62	63-66
Inseam	30 $\frac{1}{4}$	30 $\frac{3}{4}$	31 $\frac{1}{4}$	31 $\frac{3}{4}$	32 $\frac{3}{4}$	33 $\frac{1}{4}$	33 $\frac{3}{4}$	34 $\frac{1}{4}$

ENCOMPASS WOMEN'S ESSENTIALS™ PROFESSIONAL APPAREL

Size / Size Code	S / 3	M / 5	L / 7	XL / 9	2XL / 2X	3XL / 3X	4XL / 4X	5XL / 5X
Bust	35-38	39-41	42-45	46-49	50-53	54-57	58-61	62-65
Waist	24-26	27-29	30-33	34-37	38-41	42-44	45-47	48-51
Hips	33 $\frac{1}{2}$ -36 $\frac{1}{2}$	37 $\frac{1}{2}$ -39 $\frac{1}{2}$	40 $\frac{1}{2}$ -42 $\frac{1}{2}$	43 $\frac{1}{2}$ -45 $\frac{1}{2}$	46 $\frac{1}{2}$ -48 $\frac{1}{2}$	49 $\frac{1}{2}$ -51 $\frac{1}{2}$	52 $\frac{1}{2}$ -54 $\frac{1}{2}$	56 $\frac{1}{2}$ -58 $\frac{1}{2}$
Inseam	31	31 $\frac{1}{2}$	32	32 $\frac{1}{2}$	33	33 $\frac{1}{2}$	34	34 $\frac{1}{2}$

ENCOMPASS UNISEX/MEN'S PROFESSIONAL APPAREL

Size / Size Code	S / 3	M / 5	L / 7	XL / 9	2XL / 2X	3XL / 3X	4XL / 4X	5XL / 5X
Chest	36-39	40-43	44-46	47-49	50-52	53-55	56-58	60-63
Waist	30-32	34-36	38-40	42-44	46-48	50-52	54-56	58-61
Inseam	29 $\frac{1}{2}$	30	30 $\frac{1}{2}$	31	31 $\frac{5}{8}$	32 $\frac{1}{8}$	32 $\frac{3}{4}$	33 $\frac{3}{8}$



Color coded neck example

Color coding is an important feature in today's institutional professional apparel. Identifying garment size by easy-to-read color coding helps improve efficiency and eliminate confusion in the sorting, laundering and distribution process and helps staff members easily identify the right size to wear. Encompass has long incorporated color coding into our apparel and you will find our color coding system in both our Synergy and Essentials professional apparel lines.

Also, we recognize the popularity of other institutional color coding systems and help to eliminate conversion difficulty by offering a universal color coding system. In order to meet the color coding needs of all our customers, we offer Universal color coding based on traditional institutional laundering systems as an option in our Essentials professional apparel line.

ENCOMPASS (-1) COLOR CODING

XS	Orange	2XL	Misty Green
S	Ceil	3XL	Ash Gray
M	Wild Plum	4XL	Peach
L	Jade	5XL	South Sea Green
XL	Khaki		

UNIVERSAL (-2) COLOR CODING

XS	South Sea Green	2XL	Jade
S	Yellow	3XL	Ceil
M	Khaki	4XL	Orange
L	White	5XL	Red
XL	Parfait Pink		



Above: Fundamentals Unisex One Pocket Top
(14000 – Sand, left and Caribbean, right)

Below: Fundamentals Ladies Two Pocket Top (14100 – Ceil)



fundamentals

Fundamentals™ by White Swan utilizes a market proven high performance 65/35 polyester/cotton poplin fabric with soil release that is colorfast, wrinkle resistant and shrinkage controlled. Fundamentals staff apparel is available in a wide range of popular colors and styles.

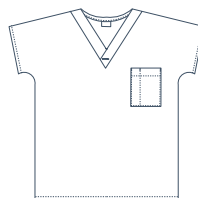
Fundamentals Unisex One Pocket Top

- 28" length
- Left breast pocket with pen holder
- Badge holding buttonhole on v-neck
- 65/35 polyester/cotton poplin with soil release
- Core sizes: XXS-5X
- Fashion sizes: XXS-5X

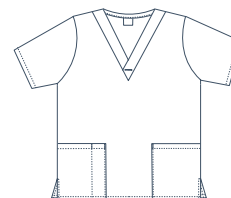
Fundamentals Ladies Two Pocket Top

- 28" length
- Set-in sleeves
- Front patch pockets – one with pen holder
- Side slits
- Badge holding buttonhole on v-neck
- 65/35 polyester/cotton poplin with soil release
- Core sizes: XXS-5X
- Fashion sizes: XXS-5X

STYLE #	DESCRIPTION	COLORS
14000	Fundamentals Unisex Top	Available in all core and fashion colors listed below.
14100	Fundamentals Ladies 2 Pocket Top	Available in all core and fashion colors listed below.



14000



14100

CORE SWATCHES & CODES

011 White

014 Navy

015 Black

034 Hunter

038 Wine

042 Chocolate

046 Ceil

054 New Navy

064 Royal

073 Khaki

080 Caribbean



Left: Fundamentals Unisex Pant (14020 – Chocolate)
Right: Fundamentals Cargo Pocket Pant (14120 – White)



14020



14120



Fundamentals Ladies Warm-Up Jacket
(14140 – Galaxy Blue)

Fundamentals™ Unisex Drawstring Pant

- 19" leg opening
- Inseam 31", Short 27½", Tall 33"
- Drawstring waist
- Matching color belt
- Back hip and cargo pocket
- 65/35 polyester/cotton poplin with soil release
- Core color sizes: XXS-7X, XSSH-3XSH, XST-2XT
- Fashion color sizes: XXS-5X, XSSH-3XSH, XST-2XT

Fundamentals Ladies Cargo Two Pocket Pant

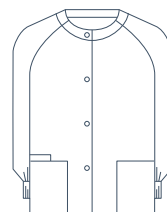
- 16" leg opening
- Inseam 30", Petite 28", Tall 32"
- Covered elastic waistband
- 65/35 polyester/cotton poplin with soil release
- Core color sizes: XS-5X, XSP-3XP, ST-XLT
- Fashion color sizes: XS-5X, XSP-2XP

STYLE #	DESCRIPTION	COLORS
14020	Fundamentals Unisex Pant (Sand and Nickel are only available in XS-5X)	Available in all core and fashion colors listed below.
14120	Fundamentals Cargo Pocket Pant	Available in all core and fashion colors listed below.

Fundamentals Ladies Warm-Up Jacket

- 29" length
- Color matching snaps
- Stitched fully faced neckline
- Three pockets – one for cell phone
- Matching ribbed knit cuffs
- 65/35 polyester/cotton poplin with soil release
- Sizes: XS-5X

STYLE #	DESCRIPTION	COLORS
14140	Fundamentals Ladies Warm-Up Jacket	Available in all core and fashion colors listed below.



14140

FASHION SWATCHES & CODES

016 Red

017 Teal

078 Seaspray

122 Purple

1031 Galaxy Blue

1040 Granite

1059 Paris Pink

1246 Sand

1247 Nickel



Fundamentals Layering Tee and Fundamentals Flare Leg Pant (14239, 14123 – Wine)

Fundamentals™ Ladies Layering Tee

- Long sleeves
- Rounded neck
- 95/5 cotton/spandex knit
- Sizes: XS-3X

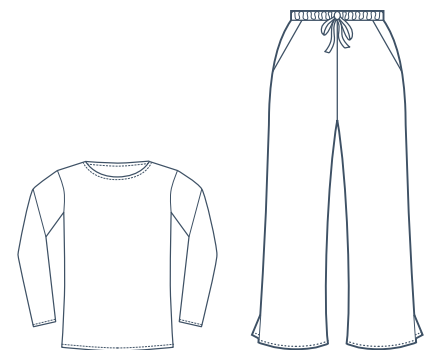
Fundamentals Ladies Flare Leg Pant

- 23" leg opening with 3" side slits
- Inseam: 31", Petite 29", Tall 33"
- Drawstring front with narrow back elastic waist
- Mid-waist fit and quarter top pockets
- 65/35 polyester/cotton poplin with soil release
- Core color sizes: XXS-5X, XXSP-2XP, XST-2XT
- Fashion color sizes: XXS-5X, XSP-2XP

STYLE #	DESCRIPTION	COLORS
14239	Fundamentals Ladies Layering Tee	Available in core and fashion colors shown in image below.
14123	Fundamentals Ladies Flare Leg Pant	Available in all core and fashion colors listed below.



Fundamentals Layering Tee Colors



14239

14123

CORE SWATCHES & CODES

011 White

034 Hunter

046 Ceil

073 Khaki

014 Navy

038 Wine

054 New Navy

080 Caribbean

015 Black

042 Chocolate

064 Royal



STARLIGHT COLLECTION BY encompass

Encompass understands what families go through when a child is sick, and how important it is to be surrounded by an environment that supports a child's natural ability to cope and heal. In selecting Starlight Children's Foundation™ as its national charity partner, Encompass Group shares in Starlight's vision to improve the quality of life for children with chronic or life-threatening illness. With cheerful colors and prints drawn by seriously-ill children and their siblings, the Starlight Collection by Encompass demonstrates our ongoing commitment to provide a comforting environment for the physical and emotional needs of patients and families.



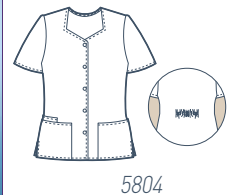
5792

5792
Shaped Binded V-Neck Top
Pattern: You Are Not Alone
Code: 401



5788

5788
Cardigan with Black Elastic
Pattern: Melody of the Sky
Code: 3465



5804

5804
Sweetheart Neck Top
Pattern: One Small Star
Code: 404

Shaped Binded V-Neck Top

- 26" length
- Back elastic
- Large patch pockets
- Side vents
- 65/35 poly/cotton brushed Ppplin
- Sizes: XS-5X

Cardigan with Back Elastic

- 29" length
- Snap front
- Elastic cuff
- 2 roomy patch pockets
- 65/35 poly/cotton brushed poplin
- Sizes: XS-5X

Sweetheart Neck Top

- 27" length
- 5 snap closure
- 3 patch pockets – one for cell phone
- Back elastic for shaping
- Side vents
- 65/35 poly/cotton brushed poplin
- Sizes: XS-5X

BENEFITING **starlight**
children's foundation starlight.org

For more information on these products, as well as the other products offered as part of our Starlight Collection, and how your purchase benefits Starlight Children's Foundation, please contact 1-800-284-4540.

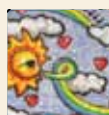
FASHION SWATCHES & CODES



You Are Not Alone, code 401
by Anna Kristina, Age 11
Brother Peter Lukas was diagnosed with cancer at 10 months.

Coordinates with:

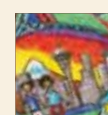
011 White	043 Chocolate
046 Ceil	1059 Paris Pink



Melody of the Sky, code 3465
by Myron, Age 16
Diabetes, diagnosed at age 9

Coordinates with:

011 White	015 Black
016 Red	046 Royal



One Small Star, code 404
by Noah, Age 15
Asthma, diagnosed at age 10

Coordinates with:

011 White	015 Black
016 Red	046 Ceil

Each Starlight construction garment is available in all swatches.



Super-Soft Evolution Nonwoven Warm-Up Jacket



Essentials Nonwoven Warm-Up Jacket

Techstyles® nonwoven staff apparel is available in two materials to provide a fresh, clean and professional image with quality and performance you can count on.

Our Super-Soft Evolution™ products are constructed of a technologically advanced material designed for superior comfort and performance. The unique texture offers unparalleled quality, opacity, fit and feel.

Essentials™ products are a great value, made of traditional spunbond polypropylene and are available in dark blue or wine.

Super-Soft Evolution Nonwoven Warm-Up Jackets

LATEX
FREE

- Fluid resistant
- Long or short sleeve
- Knit collar
- Knit cuffs

CAT NO.	DESCRIPTION	MATERIAL	SIZE	COLOR	QTY/CASE
9682	Jacket, Long Sleeve	SBPP	Medium	True Blue	24 EA
9683	Jacket, Long Sleeve	SBPP	Large	True Blue	24 EA
9684	Jacket, Long Sleeve	SBPP	X-Large	True Blue	24 EA
9640	Jacket, Short Sleeve	SBPP	Petite	True Blue	50 EA
9641	Jacket, Short Sleeve	SBPP	Small	True Blue	50 EA
9642	Jacket, Short Sleeve	SBPP	Medium	True Blue	50 EA
9643	Jacket, Short Sleeve	SBPP	Large	True Blue	50 EA

Essentials Nonwoven Warm-Up Jackets

LATEX
FREE

- Knit collar
- Knit cuffs
- Snap front
- Two pockets

CAT NO.	DESCRIPTION	MATERIAL	SIZE	COLOR	QTY/CASE
SC760M	Jacket, Long Sleeve	SBPP	Medium	Dark Blue	24 EA
SC760L	Jacket, Long Sleeve	SBPP	Large	Dark Blue	24 EA
SC760XL	Jacket, Long Sleeve	SBPP	X-Large	Dark Blue	24 EA



- Fluid resistant
- Drawstring or elastic waist
- Reinforced seats
- Sizes up to 3X-Large

Super-Soft Evolution™ Nonwoven Staff Apparel LATEX FREE

CAT NO.	DESCRIPTION	SIZE	COLOR	MATERIAL	QTY/CASE
TOPS					
9650	Top, V-Neck	Petite	Blue	SBPP	60 EA
9651	Top, V-Neck	Small	Blue	SBPP	60 EA
9652	Top, V-Neck	Medium	Blue	SBPP	60 EA
9653	Top, V-Neck	Large	Blue	SBPP	60 EA
9654	Top, V-Neck	X-Large	Blue	SBPP	50 EA
9655	Top, V-Neck	2X-Large	Blue	SBPP	50 EA
9656	Top, V-Neck	3X-Large	Blue	SBPP	50 EA
PANTS					
9623	Pant, Reinforced Elastic Waist	Medium	Blue	SBPP	50 EA
9624	Pant, Reinforced Elastic Waist	Large	Blue	SBPP	50 EA
9625	Pant, Reinforced Elastic Waist	X-Large	Blue	SBPP	50 EA
9664	Pant, Elastic Waist	X-Large	Blue	SBPP	50 EA
9665	Pant, Elastic Waist	2X-Large	Blue	SBPP	50 EA
9666	Pant, Elastic Waist	3X-Large	Blue	SBPP	50 EA
9660A	Pant, Elastic Waist	Petite	Blue	SBPP	60 EA
9661A	Pant, Elastic Waist	Small	Blue	SBPP	60 EA
9662A	Pant, Elastic Waist	Medium	Blue	SBPP	60 EA
9663A	Pant, Elastic Waist	Large	Blue	SBPP	60 EA
9671	Pant, Reinforced Drawstring Waist	Small	Blue	SBPP	50 EA
9672	Pant, Reinforced Drawstring Waist	Medium	Blue	SBPP	50 EA
9673	Pant, Reinforced Drawstring Waist	Large	Blue	SBPP	50 EA
9674	Pant, Reinforced Drawstring Waist	X-Large	Blue	SBPP	50 EA
9675	Pant, Reinforced Drawstring Waist	2X-Large	Blue	SBPP	50 EA
9676	Pant, Reinforced Drawstring Waist	3X-Large	Blue	SBPP	50 EA



- Available in two colors
- Drawstring or elastic waist
- Trimmed neck edge

Essentials™ Nonwoven Staff Apparel

**LATEX
FREE**

CAT NO.	DESCRIPTION	SIZE	COLOR	MATERIAL	PACKAGING	QTY/CASE
TOPS						
SC750P	Top, V-Neck	Petite	Dark Blue	SBPP	10/BG, 5/CS	50 EA
SC750S	Top, V-Neck	Small	Dark Blue	SBPP	10/BG, 5/CS	50 EA
SC750M	Top, V-Neck	Medium	Dark Blue	SBPP	10/BG, 5/CS	50 EA
SC750L	Top, V-Neck	Large	Dark Blue	SBPP	10/BG, 5/CS	50 EA
SC750XL	Top, V-Neck	X-Large	Dark Blue	SBPP	10/BG, 5/CS	50 EA
SC750X2	Top, V-Neck	2X-Large	Dark Blue	SBPP	10/BG, 5/CS	50 EA
SC750X3	Top, V-Neck	3X-Large	Dark Blue	SBPP	10/BG, 5/CS	50 EA
SC850P	Top, V-Neck	Petite	Wine	SBPP	10/BG, 5/CS	50 EA
SC850S	Top, V-Neck	Small	Wine	SBPP	10/BG, 5/CS	50 EA
SC850M	Top, V-Neck	Medium	Wine	SBPP	10/BG, 5/CS	50 EA
SC850L	Top, V-Neck	Large	Wine	SBPP	10/BG, 5/CS	50 EA
SC850XL	Top, V-Neck	X-Large	Wine	SBPP	10/BG, 5/CS	50 EA
SC850X2	Top, V-Neck	2X-Large	Wine	SBPP	10/BG, 5/CS	50 EA
SC850X3	Top, V-Neck	3X-Large	Wine	SBPP	10/BG, 5/CS	50 EA
PANTS						
SC700P	Pant, Drawstring Waist	Petite	Dark Blue	SBPP	10/BG, 5/CS	50 EA
SC700S	Pant, Drawstring Waist	Small	Dark Blue	SBPP	10/BG, 5/CS	50 EA
SC700M	Pant, Drawstring Waist	Medium	Dark Blue	SBPP	10/BG, 5/CS	50 EA
SC700L	Pant, Drawstring Waist	Large	Dark Blue	SBPP	10/BG, 5/CS	50 EA
SC700XL	Pant, Drawstring Waist	X-Large	Dark Blue	SBPP	10/BG, 5/CS	50 EA
SC700X2	Pant, Drawstring Waist	2X-Large	Dark Blue	SBPP	10/BG, 5/CS	50 EA
SC700X3	Pant, Drawstring Waist	3X-Large	Dark Blue	SBPP	10/BG, 5/CS	50 EA
SC710P	Pant, Elastic Waist	Petite	Dark Blue	SBPP	10/BG, 5/CS	50 EA
SC710S	Pant, Elastic Waist	Small	Dark Blue	SBPP	10/BG, 5/CS	50 EA
SC710M	Pant, Elastic Waist	Medium	Dark Blue	SBPP	10/BG, 5/CS	50 EA
SC710L	Pant, Elastic Waist	Large	Dark Blue	SBPP	10/BG, 5/CS	50 EA
SC710XL	Pant, Elastic Waist	X-Large	Dark Blue	SBPP	10/BG, 5/CS	50 EA
SC710X2	Pant, Elastic Waist	2X-Large	Dark Blue	SBPP	10/BG, 5/CS	50 EA
SC710X3	Pant, Elastic Waist	3X-Large	Dark Blue	SBPP	10/BG, 5/CS	50 EA
SC800P	Pant, Drawstring Waist	Petite	Wine	SBPP	10/BG, 5/CS	50 EA
SC800S	Pant, Drawstring Waist	Small	Wine	SBPP	10/BG, 5/CS	50 EA
SC800M	Pant, Drawstring Waist	Medium	Wine	SBPP	10/BG, 5/CS	50 EA
SC800L	Pant, Drawstring Waist	Large	Wine	SBPP	10/BG, 5/CS	50 EA
SC800XL	Pant, Drawstring Waist	X-Large	Wine	SBPP	10/BG, 5/CS	50 EA
SC800X2	Pant, Drawstring Waist	2X-Large	Wine	SBPP	10/BG, 5/CS	50 EA
SC800X3	Pant, Drawstring Waist	3X-Large	Wine	SBPP	10/BG, 5/CS	50 EA
SC810P	Pant, Elastic Waist	Petite	Wine	SBPP	10/BG, 5/CS	50 EA
SC810S	Pant, Elastic Waist	Small	Wine	SBPP	10/BG, 5/CS	50 EA
SC810M	Pant, Elastic Waist	Medium	Wine	SBPP	10/BG, 5/CS	50 EA
SC810L	Pant, Elastic Waist	Large	Wine	SBPP	10/BG, 5/CS	50 EA
SC810XL	Pant, Elastic Waist	X-Large	Wine	SBPP	10/BG, 5/CS	50 EA
SC810X2	Pant, Elastic Waist	2X-Large	Wine	SBPP	10/BG, 5/CS	50 EA
SC810X3	Pant, Elastic Waist	3X-Large	Wine	SBPP	10/BG, 5/CS	50 EA



Lab Apparel

Encompass delivers protection, performance and comfort in our lab apparel line. Our reusable labcoats are the perfect blend of style and function, while performance fabrics enhance the multiple product features and user benefits of our line.

Along with the quality products from Encompass, this line features lab apparel from one of the most recognized names in healthcare apparel, META™ Labwear.

Our nonwoven laboratory apparel selection includes traditional materials in a variety of styles as well as the unique comfort and protection that only Thermoflect® heat reflective technology can offer. Thermoflect technology has been trusted by clinicians for over 20 years to protect at risk patients from hypothermia and is now available in our high performance staff jackets.



Above: Essentials Men's All-Purpose Labcoat (47405 - White)
Below: Essentials Women's Princess-Style Labcoat (47401 - White)



Essentials™ Men's All-Purpose Labcoat

- Classically styled four-button coat available in three lengths
- Features three outside patch pockets, a pager pocket and side access slits for pants/skirt pockets
- 80/20 polyester/cotton poplin treated with a stain release finish
- Available individually

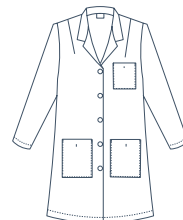
CAT NO.	DESCRIPTION	COLOR	SIZES
47405-W	Coat, Full-Length	White	Men's 32-56
47406-W	Coat, Knee-Length	White	Men's 32-56
47407-W	Coat, Staff-Length	White	Men's 32-56



Essentials Women's Princess-Style Labcoat

- Tailored, single breasted style with five-button front
- Features a mock belt, three pockets and set-in sleeves
- 80/20 polyester/cotton poplin treated with a stain release finish
- Available individually

CAT NO.	DESCRIPTION	COLOR	SIZES
47401-W	Coat, Princess-Style	White	Women's 02-18, 40-52





Merit Labcoat (47434 – White)

Merit™ Unisex Labcoat

- Simple styling and features are ideal for cost conscious customers
- Feature three pockets and side access slits for pants/skirt pockets
- 80/20 polyester/cotton poplin treated with a stain release finish
- Available individually or in cases of 12 coats

CAT NO.	DESCRIPTION	COLOR	SIZES
47434-W	Coat, 38" Length	White	XS-3XL



Merit Women's Labcoat

- Tailored, single breasted coat with four-button front
- Features stitched down back belt and three pockets
- 80/20 polyester/cotton poplin
- Available individually

CAT NO.	DESCRIPTION	COLOR	SIZES
47408-W	Coat, 39½" Length	White	Women's 04-18, 40-52





Above: Meta Labwear 38" Twill Labcoat (1963 – White)
Below: Meta Labwear 37" Twill Labcoat (1964 – White)

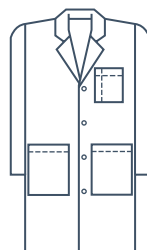


Meta™ Labwear 38" Twill Labcoat

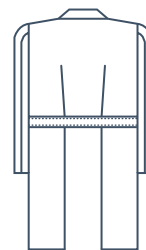
- Hand access slits
- 5 pockets, 2 inside – 1 with scissors holder
- Pen divider on chest pocket
- Pleated back with sewn-down belt
- Matches women's style 1964
- 65/35 fine line twill with soil release

CAT NO.	DESCRIPTION	COLOR	SIZES
1963	Coat, 38" Length	White	Men's 32-60, 38L-56L

For size codes, please reference the Meta and Encompass sizing charts on page 24.



1963 (front)



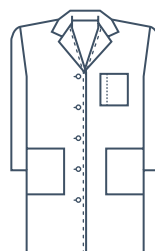
1963 (back)

Meta Labwear 37" Twill Labcoat

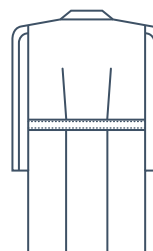
- 5 pockets, 2 inside pockets
- Pen holder in breast pocket
- Scissors holder
- Hand access slits
- Edge stitched front
- Matches men's style 1963
- Back has sewn-down belt with accenting darts above and pleats below
- 80/20 super blend twill with soil release

CAT NO.	DESCRIPTION	COLOR	SIZES
1964	Coat, 37" Length	White	Women's 0-20, 40-48 (20W-28W), 8T-20T

For size codes, please reference the Meta and Encompass sizing charts on page 24.



1964 (front)



1964 (back)



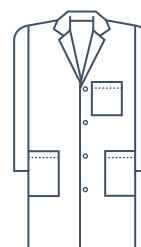
Meta Labwear 40" Unisex Labcoat (6116 – White)

Meta™ Labwear 40" Unisex Labcoat

- 4 pockets, 1 inside pocket
- Hand access slits
- 2-piece back swing belt
- White: 65/35 performance poplin with soil release
- Colors: 65/35 poplin with soil release

CAT NO.	DESCRIPTION	COLOR	SIZES
6116	Coat, 40" Length	011 White	XXS-5X, ST-3XT
		014 Navy	XS-5X
		015 Black	
		019 Blue	
		1247 Nickel	XS-5X, ST-3XT

For size codes, please reference the Meta and Encompass sizing charts on page 24.



6116

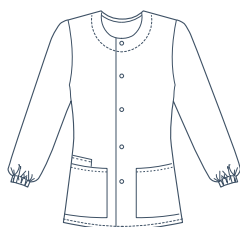


Above: Meta Labwear 38" Unisex Silver Safe Care Labcoat (782 – White)

Below: Meta Labwear 30" Unisex Silver Safe Warm-Up Jacket (827 – White)



782



827



Meta™ delivers world class protection, performance and comfort in a new labcoat featuring Silver SafeCare® fabric with X-STATIC® antimicrobial technology. Specifically designed to protect the labcoat from bacteria growth, the X-STATIC silver technology offers comprehensive and continuous protection for the life of the garment. The labcoat also delivers superior comfort by regulating temperature and reducing static build-up. You will know your labcoat is protected for its usable life because you can actually see the silver!

X-STATIC® and The Silver Fiber® are trademarks of Noble Biomaterials, Inc., the global leader in antimicrobial solutions.

Meta Labwear 38" Unisex Labcoat with X-Static Silver

- Antimicrobial fabric protection
- Odor elimination
- Thermal comfort management
- Anti-static performance
- 4 pockets
- 1 inside pocket
- Hand access slits
- 78% polyester/20% cotton, 2% X-Static silver twill

CAT NO.	DESCRIPTION	COLOR	SIZES
782	Coat, 38" Length	White	XS-5X

For size codes, please reference the Meta and Encompass sizing charts on page 24.

Meta Labwear 30" Unisex Warm-up Jacket with X-Static Silver

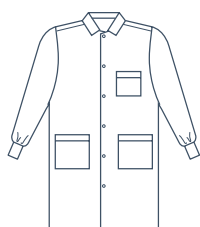
- Antimicrobial fabric protection
- Odor elimination
- Thermal comfort management
- Anti-static performance
- Elastic cuff, snap closure
- 3 pockets: 2 patch, 1 cell
- 78% polyester/20% cotton, 2% X-Static silver twill
- Sizes: XS-5X

CAT NO.	DESCRIPTION	COLOR	SIZES
827	Coat, 30" Length	011 White	XS-5X

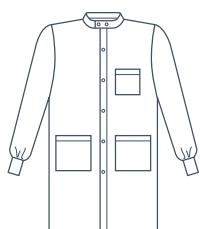
For size codes, please reference the Meta and Encompass sizing charts on page 24.



SafeGuard and SafeGuard Plus
Snap Front Labcoat



46942



46943

SafeGuard™ Fluid Resistant Fabric Labcoats

- 99% polyester/1% carbon
- Stain release finish
- Chest pocket
- Two lower patch pockets
- Knit cuffs
- Side access vents
- Available individually
- Snap front

CAT NO.	DESCRIPTION	SIZE	COLOR	QTY/CASE
46942-103	Coat, Lapel Collar	Small	White	12 EA
46942-105	Coat, Lapel Collar	Medium	White	12 EA
46942-107	Coat, Lapel Collar	Large	White	12 EA
46942-109	Coat, Lapel Collar	X-Large	White	12 EA
46942-102X	Coat, Lapel Collar	2X-Large	White	12 EA
46942-113	Coat, Lapel Collar	Small	Blue	12 EA
46942-115	Coat, Lapel Collar	Medium	Blue	12 EA
46942-117	Coat, Lapel Collar	Large	Blue	12 EA
46942-119	Coat, Lapel Collar	X-Large	Blue	12 EA
46942-112X	Coat, Lapel Collar	2X-Large	Blue	12 EA
46943-103	Coat, Standup Collar	Small	White	12 EA
46943-105	Coat, Standup Collar	Medium	White	12 EA
46943-107	Coat, Standup Collar	Large	White	12 EA
46943-109	Coat, Standup Collar	X-Large	White	12 EA
46943-102X	Coat, Standup Collar	2X-Large	White	12 EA
46943-113	Coat, Standup Collar	Small	Blue	12 EA
46943-115	Coat, Standup Collar	Medium	Blue	12 EA
46943-117	Coat, Standup Collar	Large	Blue	12 EA
46943-119	Coat, Standup Collar	X-Large	Blue	12 EA
46943-112X	Coat, Standup Collar	2X-Large	Blue	12 EA

Encompass Professional Labcoat Sizing Chart

WOMEN'S LABCOATS – MISSES SIZES

Size Code	02	04	06	08	10	12	14	16	18	20
Bust	32	33	34	35	36	37½	39	40½	42½	44½
Waist	24	25	26	27	28	29½	31	32½	34½	36½
Hips	34½	35½	36½	37½	38½	40	41½	43	45	47

WOMEN'S LABCOATS – WOMEN'S SIZES

Size Code	40	42	44	46	48	50	52
Bust	46½	48	50	52	54	56	58
Waist	38½	40½	42½	44½	46½	48½	50½
Hips	49	51	53	55	57	59	61

MEN'S LABCOATS

Size Code	32	34	36	38	40	42	44	46	48	50	52	54	56
Chest	32	34	36	38	40	42	44	46	48	50	52	54	56
Waist	26	28	30	32	34	36	38	40	42	44	46	48	50

UNISEX LABCOATS

Size Code	XS	S	M	L	XL	2X	3X
Men's Size	30-32	34-36	38-40	42-44	46-48	50-52	54-56
Women's Size	04-06	08-10	12-14	16-18	40-42	44-46	48-50

Meta® Labcoat Sizing Chart

WOMEN'S LABCOATS – MISSES SIZES: 5'4½" to 5'7" and TALL SIZES (T): 5'7½" TO 5'11"

Size Code	04	06	08	10	12	14	16	18	20
Bust	33	34	35	36	37½	39	40½	42½	44½
Waist	24	25	26	27	28½	30	31½	33½	35½
Hips	34	35	36	37	38½	40	41½	43½	45½

WOMEN'S LABCOATS – WOMEN'S SIZES

Size Code	40	42	44	46	48	50	52
Bust	46½	48½	50½	52½	54½	56½	58½
Waist	37½	39½	41½	43½	45½	47½	49½
Hips	47½	49½	51½	53½	55½	57½	59½

MEN'S LABCOATS – REGULAR SIZES: 5' 8" to 5' 11" and LONG SIZES (L): 6' TO 6' 3"

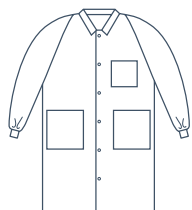
Size Code	32	34	36	38	40	42	44	46	48	50	52	54	56
Chest	32	34	36	38	40	42	44	46	48	50	52	54	56
Waist	26	28	30	32	34	36	38	40	42	44	46	48	50

UNISEX LABCOATS

Size Code	XS	S	M	L	XL	2X	3X
Men's Size	30-32	34-36	38-40	42-44	46-48	50-52	54-56
Women's Size	04-06	08-10	12-14	16-18	40-42	44-46	48-50

Some sizes available in this book are not listed on these charts.
Please contact your Encompass Group Sales Representative for information about these additional sizes.

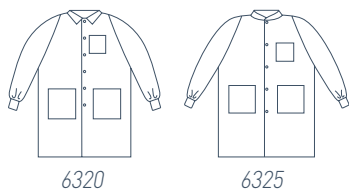
HOW TO ORDER STYLE # + 10 COLOR + 1 SIZE = CATALOG NUMBER



- Anti-static treated
- Heavyweight material
- Three reinforced pockets
- Snap front, hang loop
- Knit cuffs

SafeCare® Nonwoven Staff Coats LATEX FREE

CAT NO.	DESCRIPTION	MATERIAL	SIZE	COLOR	QTY/CASE
47389-110N	Coat, Traditional Collar	SMS/SMMS	Petite	White	25 EA
47389-120N	Coat, Traditional Collar	SMS/SMMS	Small	White	25 EA
47389-130N	Coat, Traditional Collar	SMS/SMMS	Medium	White	25 EA
47389-140N	Coat, Traditional Collar	SMS/SMMS	Large	White	25 EA
47389-150N	Coat, Traditional Collar	SMS/SMMS	X-Large	White	25 EA
47389-160N	Coat, Traditional Collar	SMS/SMMS	2X-Large	White	25 EA
47389-170N	Coat, Traditional Collar	SMS/SMMS	3X-Large	White	25 EA
47389-210N	Coat, Traditional Collar	SMS/SMMS	Petite	Blue	25 EA
47389-220N	Coat, Traditional Collar	SMS/SMMS	Small	Blue	25 EA
47389-230N	Coat, Traditional Collar	SMS/SMMS	Medium	Blue	25 EA
47389-240N	Coat, Traditional Collar	SMS/SMMS	Large	Blue	25 EA
47389-250N	Coat, Traditional Collar	SMS/SMMS	X-Large	Blue	25 EA
47389-260N	Coat, Traditional Collar	SMS/SMMS	2X-Large	Blue	25 EA
47389-270N	Coat, Traditional Collar	SMS/SMMS	3X-Large	Blue	25 EA



- Anti-static treated
- Lightweight material
- Traditional or knit collar
- Three reinforced pockets
- Snap front, hang loop
- Knit cuffs

ValueCare® Nonwoven Staff Coats LATEX FREE

CAT NO.	DESCRIPTION	MATERIAL	SIZE	COLOR	QTY/CASE
6320-125	Coat, Traditional Collar	SMS/SMMS	Small	White	30 EA
6320-135	Coat, Traditional Collar	SMS/SMMS	Medium	White	30 EA
6320-145	Coat, Traditional Collar	SMS/SMMS	Large	White	30 EA
6320-155	Coat, Traditional Collar	SMS/SMMS	X-Large	White	30 EA
6320-165	Coat, Traditional Collar	SMS/SMMS	2X-Large	White	30 EA
6325-125	Coat, Knit Collar	SMS/SMMS	Small	White	30 EA
6325-135	Coat, Knit Collar	SMS/SMMS	Medium	White	30 EA
6325-145	Coat, Knit Collar	SMS/SMMS	Large	White	30 EA
6325-155	Coat, Knit Collar	SMS/SMMS	X-Large	White	30 EA
6325-165	Coat, Knit Collar	SMS/SMMS	2X-Large	White	30 EA
6325-225	Coat, Knit Collar	SMS/SMMS	Small	Blue	30 EA
6325-235	Coat, Knit Collar	SMS/SMMS	Medium	Blue	30 EA
6325-245	Coat, Knit Collar	SMS/SMMS	Large	Blue	30 EA
6325-255	Coat, Knit Collar	SMS/SMMS	X-Large	Blue	30 EA
6325-265	Coat, Knit Collar	SMS/SMMS	2X-Large	Blue	30 EA

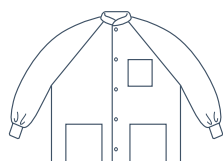
Basic Coverage

Fluid Resistant

Fluid Barrier

Impervious















TECHstyles®



- Anti-static treated
- Heavyweight material
- Three reinforced pockets
- Snap front, hang loop
- Knit cuffs

SafeCare® Nonwoven Staff Jackets













LATEX
FREE

CAT NO.	DESCRIPTION	MATERIAL	SIZE	COLOR	QTY/CASE
 47386-110	Jacket, Knit Collar	SMS/SMMS	Petite	White	25 EA
 47386-120	Jacket, Knit Collar	SMS/SMMS	Small	White	25 EA
 47386-130	Jacket, Knit Collar	SMS/SMMS	Medium	White	25 EA
 47386-140	Jacket, Knit Collar	SMS/SMMS	Large	White	25 EA
 47386-150	Jacket, Knit Collar	SMS/SMMS	X-Large	White	25 EA
 47386-160	Jacket, Knit Collar	SMS/SMMS	2X-Large	White	25 EA
 47386-170	Jacket, Knit Collar	SMS/SMMS	3X-Large	White	25 EA
 47386-210	Jacket, Knit Collar	SMS/SMMS	Petite	Blue	25 EA
 47386-220	Jacket, Knit Collar	SMS/SMMS	Small	Blue	25 EA
 47386-230	Jacket, Knit Collar	SMS/SMMS	Medium	Blue	25 EA
 47386-240	Jacket, Knit Collar	SMS/SMMS	Large	Blue	25 EA
 47386-250	Jacket, Knit Collar	SMS/SMMS	X-Large	Blue	25 EA
 47386-260	Jacket, Knit Collar	SMS/SMMS	2X-Large	Blue	25 EA
 47386-270	Jacket, Knit Collar	SMS/SMMS	3X-Large	Blue	25 EA

ValueCare® Nonwoven Staff Jackets

LATEX
FREE


- Anti-static treated
- Lightweight material
- Three reinforced pockets
- Snap front, hang loop
- Knit cuffs

CAT NO.	DESCRIPTION	MATERIAL	SIZE	COLOR	QTY/CASE
 6225-125	Jacket, Knit Collar	SMS/SMMS	Small	White	30 EA
 6225-135	Jacket, Knit Collar	SMS/SMMS	Medium	White	30 EA
 6225-145	Jacket, Knit Collar	SMS/SMMS	Large	White	30 EA
 6225-155	Jacket, Knit Collar	SMS/SMMS	X-Large	White	30 EA
 6225-165	Jacket, Knit Collar	SMS/SMMS	2X-Large	White	30 EA
 6225-175	Jacket, Knit Collar	SMS/SMMS	3X-Large	White	30 EA
 6225-225	Jacket, Knit Collar	SMS/SMMS	Small	Blue	30 EA
 6225-235	Jacket, Knit Collar	SMS/SMMS	Medium	Blue	30 EA
 6225-245	Jacket, Knit Collar	SMS/SMMS	Large	Blue	30 EA
 6225-255	Jacket, Knit Collar	SMS/SMMS	X-Large	Blue	30 EA
 6225-265	Jacket, Knit Collar	SMS/SMMS	2X-Large	Blue	30 EA
 6225-275	Jacket, Knit Collar	SMS/SMMS	3X-Large	Blue	30 EA

TECHstyles®



Basic Coverage



Fluid Resistant



Fluid Barrier



Impervious



Thermoflect Staff Jacket, Silver



Thermoflect® Heat Reflective Technology is another innovation exclusively available from Encompass. The unique construction is based on technology pioneered by NASA that uses science instead of electricity to reflect and preserve the body's radiant heat while simultaneously eliminating convective heat loss (wind chill).

Evidence-based practices have demonstrated the best solution for hypothermia is prevention. For over 20 years Thermoflect has been the proactive solution of choice in the fight against hypothermia. It is specifically designed to maintain normothermia and aid in the prevention of hypothermia. This special silver material is lined with a soft blue inner surface that provides added comfort without compromising the lightweight nature of the product.

Contact your Encompass Group Sales Representative for more information on how your facility can implement a proactive hypothermia prevention protocol using Thermoflect hypothermia prevention products or visit www.thermoflect.com.



Thermoflect Staff Jacket, Blue

Thermoflect Staff Jackets

**LATEX
FREE**

	CAT NO.	DESCRIPTION	MATERIAL	SIZE	COLOR	QTY/CASE
	5140-300	Jacket, Knit Collar/Cuff	Thermoflect/SBPP	Medium	Silver	25 EA
	5140-350	Jacket, Knit Collar/Cuff	Thermoflect/SBPP	Medium	Blue	25 EA
	5140-400	Jacket, Knit Collar/Cuff	Thermoflect/SBPP	Large	Silver	25 EA
	5140-450	Jacket, Knit Collar/Cuff	Thermoflect/SBPP	Large	Blue	25 EA
	5140-500	Jacket, Knit Collar/Cuff	Thermoflect/SBPP	X-Large	Silver	25 EA



**NOT FOR
USE IN MRI**



Performance Products

Albahealth® understands the importance of superior comfort needed in apparel for all-day wear. The A.M.P.S.™ (Albahealth Medical Performance System) product lines address the needs of those in an active work environment with high quality products focused on safety, comfort and performance.


LEG HEALTH

A.M.P.S. compression stockings feature the proper level of graduated compression needed to help reduce aches, pains and swelling associated with poor blood flow and tired legs.

The moisture management system allows the legs to breathe freely during all-day wear. The multiple sizes and styles available fit into any active lifestyle.

FOOT HEALTH

A.M.P.S. performance footwear features Coolmax® advanced moisture management yarns to keep the skin dry during all-day wear. Additional features such as ventilation panels for breathability and cushioned foot profiles provide superior comfort and fit for the active worker.

 **encompass**®

albahealth®
Improving patient outcomes

Coolmax® is a registered trademark of Invista.



A.M.P.S.™ Graduated Compression Stockings

**LATEX
FREE**

- Full foot coverage for superior comfort
- 15-20mmHg graduated compression
- Relieves aches and pains from tired legs
- Reduces swelling and improves blood flow
- Moisture management system allows skin to breathe
- Multiple colors and styles



CATALOG NUMBER		DESCRIPTION	SIZE TOE/TOP	COLOR	QTY/CASE
SMOOTH	RIBBED				
555-01	559-01	Stocking, Full Foot, Knee Length	Small	White	12 PR
555-02	559-02	Stocking, Full Foot, Knee Length	Medium	White	12 PR
555-03	559-03	Stocking, Full Foot, Knee Length	Large	White	12 PR
555-04	559-04	Stocking, Full Foot, Knee Length	X-Large	White	12 PR
B555-01	B559-01	Stocking, Full Foot, Knee Length	Small	Beige	12 PR
B555-02	B559-02	Stocking, Full Foot, Knee Length	Medium	Beige	12 PR
B555-03	B559-03	Stocking, Full Foot, Knee Length	Large	Beige	12 PR
B555-04	B559-04	Stocking, Full Foot, Knee Length	X-Large	Beige	12 PR
N555-01	N559-01	Stocking, Full Foot, Knee Length	Small	Navy	12 PR
N555-02	N559-02	Stocking, Full Foot, Knee Length	Medium	Navy	12 PR
N555-03	N559-03	Stocking, Full Foot, Knee Length	Large	Navy	12 PR
N555-04	N559-04	Stocking, Full Foot, Knee Length	X-Large	Navy	12 PR
K555-01	K559-01	Stocking, Full Foot, Knee Length	Small	Black	12 PR
K555-02	K559-02	Stocking, Full Foot, Knee Length	Medium	Black	12 PR
K555-03	K559-03	Stocking, Full Foot, Knee Length	Large	Black	12 PR
K555-04	K559-04	Stocking, Full Foot, Knee Length	X-Large	Black	12 PR

011 White

1049 Beige

054 Navy

015 Black

S Small (10"-12")

M Medium (12"-15")

L Large (15"-17")

XL X-Large (17"-19")

Measure circumference
of calf at the largest point.



A.M.P.S.™ Calf Compression Stockings LATEX FREE

- Footless design easily fits with everyday apparel
- 20-30mmHg graduated compression
- Relieves aches and pains from tired legs
- Reduces swelling and improves blood flow
- Moisture management system allows skin to breath
- Multiple colors and sizes



CAT NO.	DESCRIPTION	SIZE	COLOR	QTY/CASE
W35300	Sleeve, Above Ankle, Knee Length	Small	White	12 PR
W35310	Sleeve, Above Ankle, Knee Length	Medium	White	12 PR
W35320	Sleeve, Above Ankle, Knee Length	Large	White	12 PR
W35330	Sleeve, Above Ankle, Knee Length	X-Large	White	12 PR
B35300	Sleeve, Above Ankle, Knee Length	Small	Beige	12 PR
B35310	Sleeve, Above Ankle, Knee Length	Medium	Beige	12 PR
B35320	Sleeve, Above Ankle, Knee Length	Large	Beige	12 PR
B35330	Sleeve, Above Ankle, Knee Length	X-Large	Beige	12 PR
D35300	Sleeve, Above Ankle, Knee Length	Small	Dark Beige	12 PR
D35310	Sleeve, Above Ankle, Knee Length	Medium	Dark Beige	12 PR
D35320	Sleeve, Above Ankle, Knee Length	Large	Dark Beige	12 PR
D35330	Sleeve, Above Ankle, Knee Length	X-Large	Dark Beige	12 PR
K35300	Sleeve, Above Ankle, Knee Length	Small	Black	12 PR
K35310	Sleeve, Above Ankle, Knee Length	Medium	Black	12 PR
K35320	Sleeve, Above Ankle, Knee Length	Large	Black	12 PR
K35330	Sleeve, Above Ankle, Knee Length	X-Large	Black	12 PR

011 White

1049 Beige

1053 Dark Beige

015 Black

S Small (10"-12")

M Medium (12"-15")

L Large (15"-17")

XL X-Large (17"-19")

*Measure circumference
of calf at the largest point.*



A.M.P.S. Performance Footwear, Tab Cut
(5861 – White/Green)



A.M.P.S. Performance Footwear, Low Cut
(5852 – White/Pink)



A.M.P.S. Performance Footwear, Quarter Crew
(5862 – White/Green)



A.M.P.S. Performance Footwear, Crew
(5863 – White/Green)

A.M.P.S.™ Performance Footwear LATEX FREE

- Hidden toe seam prevents skin shearing
- Two cushioned foot profiles for added comfort
- Ventilation panel on top for breathability
- Reciprocated heel for superior fit
- Coolmax® moisture management yarns keep feet dry
- Multiple sizes and colors



CAT NO.	DESCRIPTION	SIZE	COLOR	QTY/CASE
5851	Performance Footwear, Tab Cut	9-11	White/Pink	120 PR
5861	Performance Footwear, Tab Cut	10-13	White/Green	120 PR
5951	Lite Performance Footwear, Tab Cut	9-11	White/Pink	120 PR
5852	Performance Footwear, Low Cut	9-11	White/Pink	120 PR
5902	Performance Footwear, Low Cut	9-11	Gray/Pink	120 PR
5853	Performance Footwear, Quarter Crew	9-11	White/Pink	120 PR
5903	Performance Footwear, Quarter Crew	9-11	Gray/Pink	120 PR
5862	Performance Footwear, Quarter Crew	10-13	White/Green	120 PR
5872	Performance Footwear, Quarter Crew	10-13	Black/Green	120 PR
5952	Lite Performance Footwear, Compression Crew	9-11	White/Pink	120 PR
5912	Lite Performance Footwear, Compression Crew	9-11	Gray/Pink	120 PR
5863	Performance Footwear, Crew	10-13	White/Green	120 PR
5873	Performance Footwear, Crew	10-13	Black/Green	120 PR

Washing Instructions

In order to maintain the look, function and durability of your Encompass products, the following wash instructions should be followed for the items in this catalog. The wash procedures presented here are recommended by the products' manufacturers. Following these suggested guidelines will help keep products looking better and promote a longer product life. If a particular product is not included in the following instructions, follow the instruction tag on the product itself.

REUSABLE APPAREL

General Instructions for All Products

- All new textile products should be laundered prior to use.
- Do not overload washers or dryers. To ensure thorough cleaning, washers and dryers should be loaded to allow freedom of movement for the garments.
- The following recommendations should be used as guidelines. Deviations should be made at the discretion of the laundry professional, based on the specific requirements, supplies, equipment and experience.

Color Wash (colored apparel)

1. Launder high-fashion apparel and dark colors separately.
2. Do not use chlorine bleach.
3. Machine wash on warm setting. Temperatures not to exceed the following: Apparel – 120°F
4. Rinse thoroughly.
5. Tumble dry at temperatures not to exceed 250°F.
6. Remove promptly from dryer and fold or hang to help prevent wrinkling.

White Wash (white apparel)

1. Machine wash on warm setting. Do not exceed 160°F.
2. Launder high-fashion apparel separately. When bleaching, follow the manufacturer's instructions.
3. Rinse thoroughly.
4. Tumble dry at hot or cotton setting. Temperature should not exceed 250°F.
5. Remove promptly from dryer and fold or hang to help prevent wrinkling.

Wash Instructions for Professional Labwear

In order to maintain the look of garments, we recommend you follow our guidelines for proper laundering. Deviations should be made at the discretion of the laundry professional, based on specific requirements, supplies, equipment and experience.

Colors

Launder high-fashion and dark colors separately. Do not use bleach. Machine wash on a warm setting not to exceed 120°F. Rinse thoroughly. Tumble dry at temperatures not to exceed 250°F. Remove promptly from the dryer and fold or hang to help prevent wrinkling.

Whites

Machine wash on a warm setting not to exceed 160°F. Launder high-fashion styles separately. When bleaching, follow the manufacturer's instructions. Rinse thoroughly. Tumble dry at hot or cotton setting. Temperature should not exceed 250°F. Remove promptly from dryer and fold or hang to help prevent wrinkling.

REUSABLE FLUID-RESISTANT FABRICS

Because of the repellent qualities of these fabrics, the following wash and rinse cycles are required:

Operations	Time	Level	Temp.	Supplies/100 lbs.
1. Flush	3 min.	High	Cold	
2. Flush	3 min.	High	Cold	
3. Break	7 min.	Low	160°F	8 oz. Nonionic detergent; 8 oz. alkali
4. Suds	7 min.	Low	160°F	4 oz. Nonionic detergent
5. Rinse	2 min.	High	140°F	
6. Rinse	2 min.	High	120°F	
7. Rinse	2 min.	High	100°F	
8. Rinse	2 min.	High	Cold	
9. Sour	5 min.	Low	Cold	Sour to pH 6.0

1. A thorough rinse is essential to remove all surfactants. Residual surfactants will adversely affect the repellent properties of these fabrics.
2. Excessive use of softeners is not recommended as they may adversely affect the repellent properties of these fabrics.
3. SafeCare fabrics have inherent stain-resistant properties; therefore, bleaching should not be necessary. However, if a chlorine bleach is used, use an antichlor in the second rinse. Always ensure that no chlorine remains in the fabrics after washing and that no chlorine residue is present in the washing or drying equipment.
4. After washing, garments should be thoroughly heat dried. Repellency characteristics are enhanced through heat and pressing. Press with a cool iron.



GLOBAL MANUFACTURING AND SOURCING

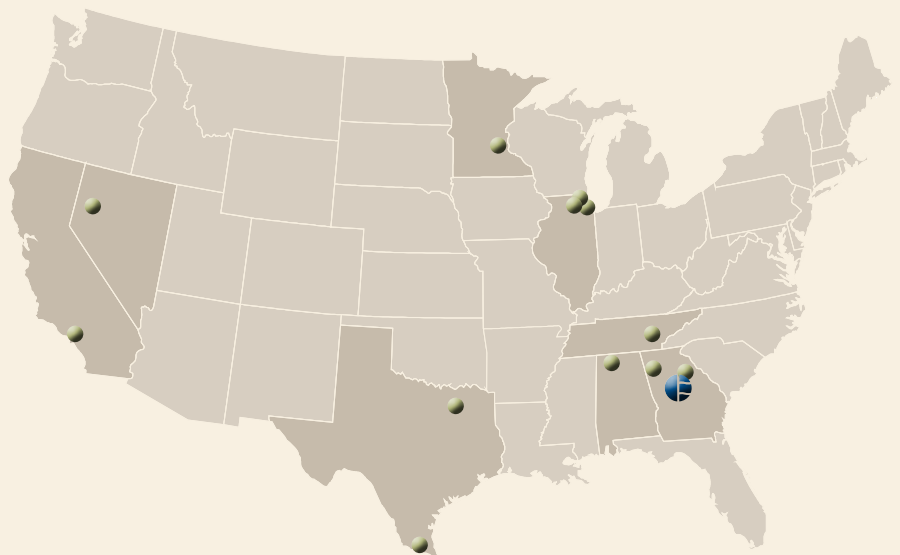
Encompass has assembled a key team of manufacturing and sourcing professionals with over 150 years of combined experience in global operations. Whether its high-tech knitting of anti-embolism stockings in Tennessee, or sourcing the latest woven and non-woven fibers and fabrics from around the world, team members are strategically located throughout the supply chain, allowing us to bring the best products we can to our customers.

In addition to our domestic manufacturing and warehousing, we operate in more than 20 countries around the world. Our long-term international partnerships result in providing you consistent product quality and reliable service at an unmatched value.

We've built a team of more than 700 dedicated professionals who specialize in all aspects of customer care including sales representatives, customer service representatives, clinical product and education resources and interior designers.

NORTH AMERICAN LOCATIONS AND DISTRIBUTION CENTERS


Muscle Shoals, Alabama
Glendale, California
Conyers, Georgia
McDonough, Georgia
Rome, Georgia
Lake Forest, Illinois
Libertyville, Illinois
Mundelein, Illinois
St. Paul, Minnesota
Sparks, Nevada
Rockwood, Tennessee
Addison, Texas
McAllen, Texas



Encompass Corporate Office



Encompass Domestic Manufacturing /Distribution Facilities

 **encompass®**

www.encompassgroup.net



615 Macon Street
McDonough, GA 30253
800-284-4540
www.encompassgroup.net

©2011 Encompass Group LLC
Lit# AC09104

Albahealth™ is an Encompass Group Company.
Techstyles™ is a Division of Encompass Group.